



CONVERSATIONS WITH INGO:  
UNPACKING THE CONCEPT  
“GIFTED”

PRESENTED BY

*DEBRA LYNNE KATZ*

WITH SPECIAL GUESTS, JON KNOWLES,  
RUSSELL PICKERING AND CORAL CARTE



FOR THE APPLIED PRECOGNITION  
PROJECT “TALK WITH SERIES” WEBINAR

<https://youtu.be/LNPbx0bTP3A>

October 7, 2019<sup>2</sup>

# Why Study Ingo?

He was and is a role model – He had excellent results within psi experiments, but not always! He was a real person, not perfect!

He was a champion of what we do as remote viewers

He presents a road map

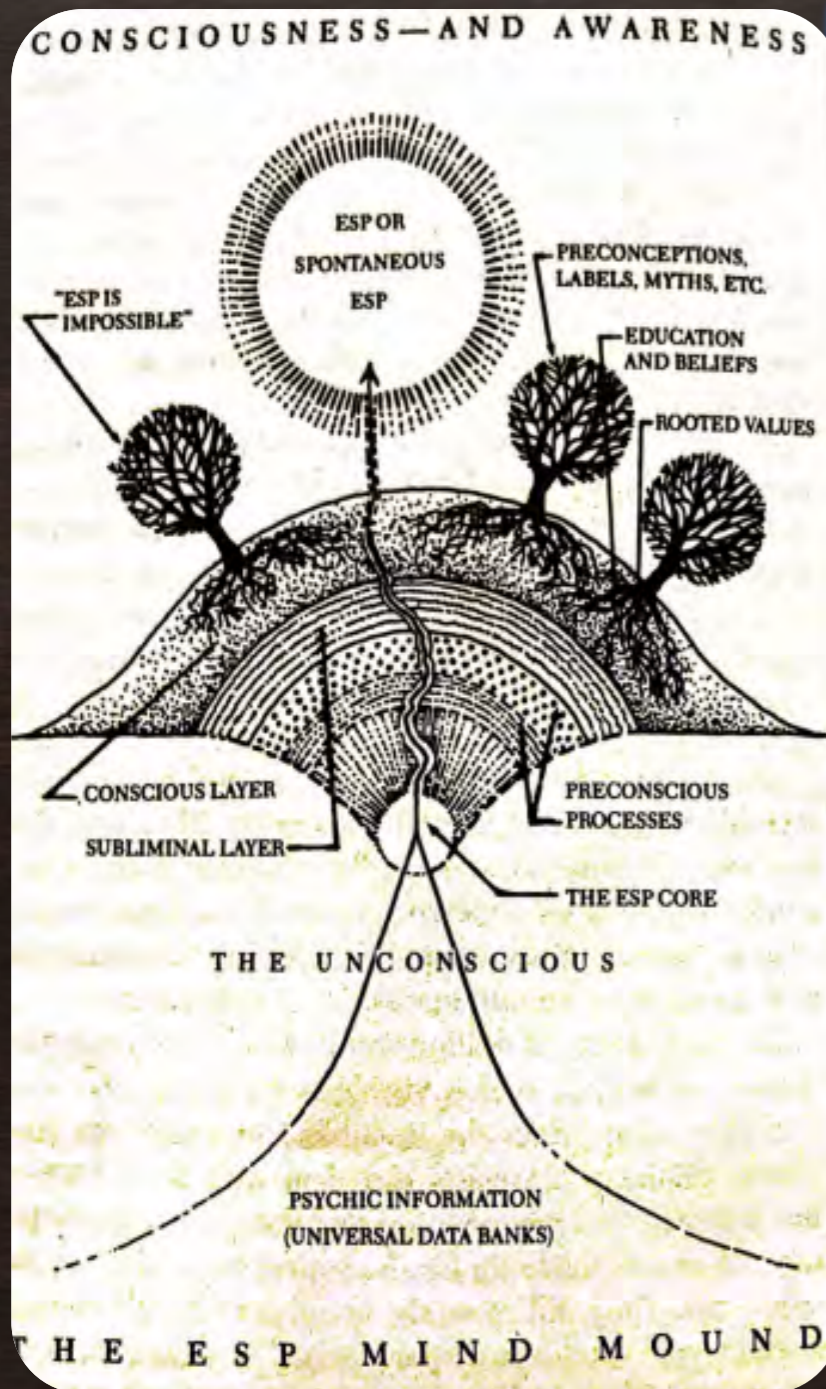
He thought more deeply of the internal mental processes and the external society environmental aspects than anyone else

His aim was not to be seen as a super psychic – it was to discover how this all worked and show the potential of the species.

He learned and taught – bi directional

## WHAT I DISCOVERED...

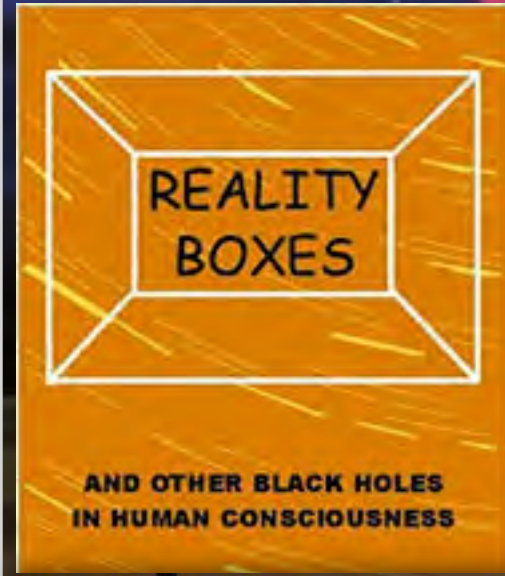
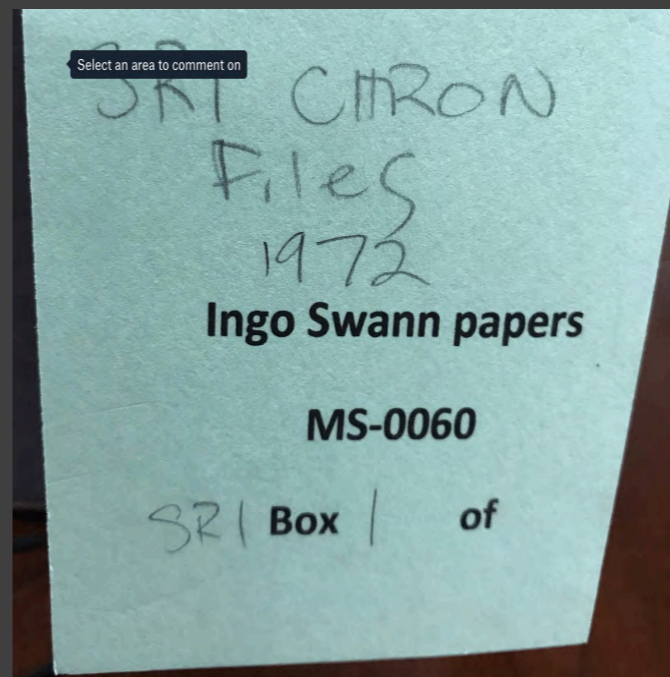
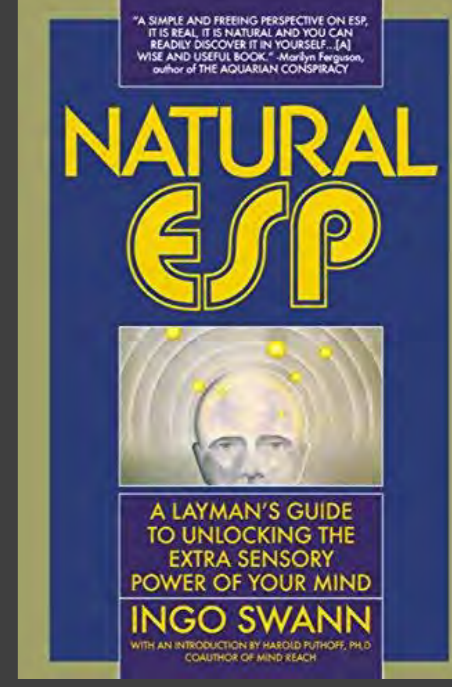
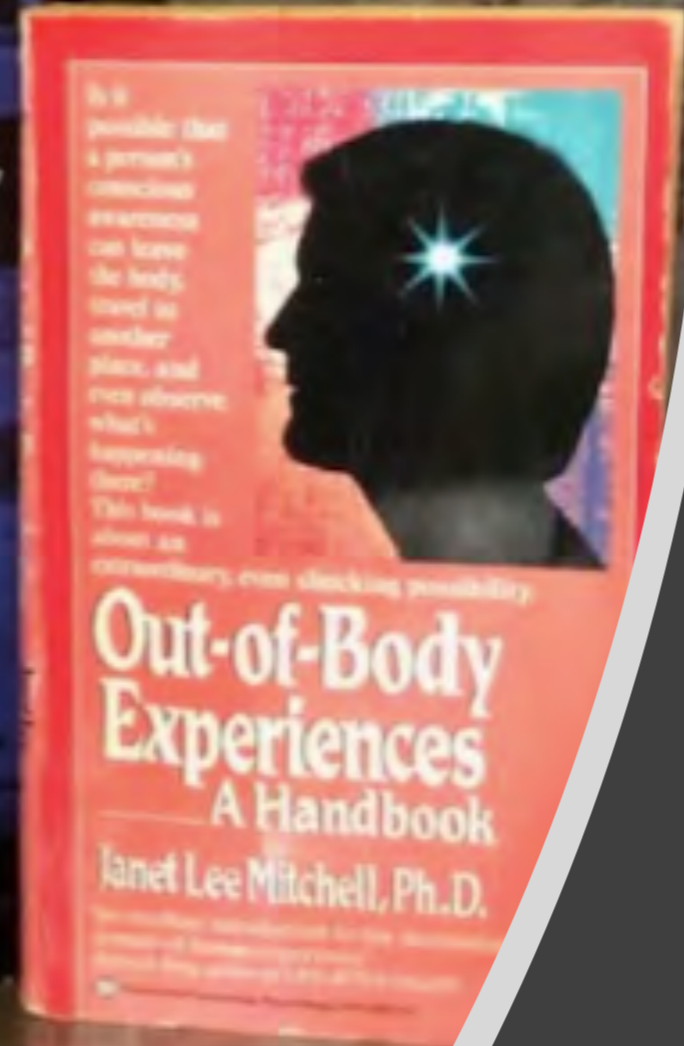
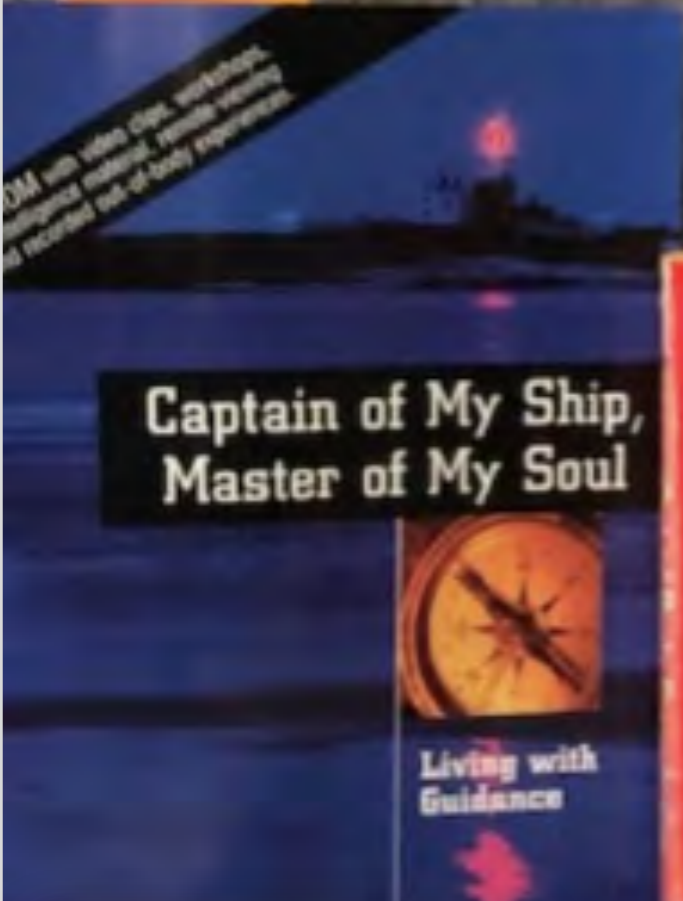
# SWANN WAS A SCIENTIST



Model by Ingo Swann,  
presented in Natural ESP

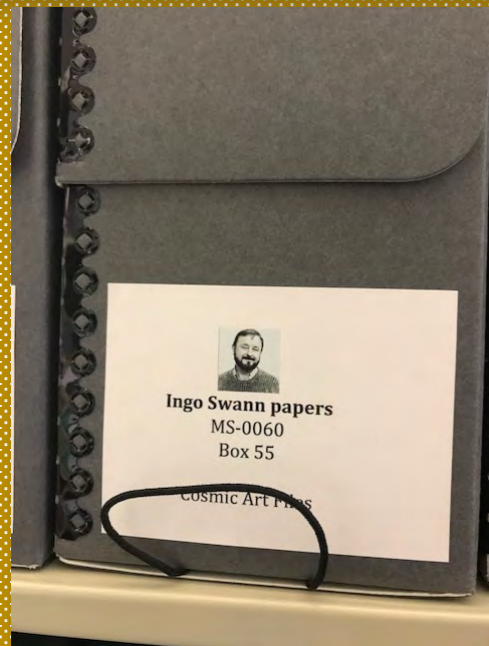
- Consultant for research and development.
- He was a creative force generator and developer of ideas and deserved co-researcher status.
- Would only do psi work in conjunction with scientists.
- Worked with 12 research labs.
- Did over 19,000 trials in a year – million in lifetime.
- He wrote his own reports of progress even when not asked.
- He kept copious documentation of everything - memos.
- Made requests for oversight, theoretical, literature reviews, etc.

# Sources for today's talk



Presentation Created by Debra Katz - [www.debrakatz.com](http://www.debrakatz.com); all images are copywrited by Ingo estate or others and can not be shared without permissions per copywrite law

# UWG INGRIM LIBRARY SPECIAL COLLECTIONS



Thank you to Blynne Olivieri, Director of UWG Special Collections,  
& Jon Knowles & Daz Smith for helping me to get organized

Presentation Created by Daz Smith - www.dazsmith.com, all images are copyrighted by Ingo estate or others and can not be shared without permissions per copyright law

# WHO WAS INGO?!!



STANFORD RESEARCH INSTITUTE  
750 LAS CALAYAS DRIVE  
MENLO PARK, CALIFORNIA 94025  
July 7, 1973

Dear Gertrude,  
Heard you are in Africa.  
I'll be finished with my tour of duty here at the front at least by August 12th. I can't begin to say how glad I will be to get back to the nervousness of NY. Definitely, if you are still in the mood, I am looking forward to an approach to psychometry and I hope we can begin to get into that. All my experiments here confirm my suspicion and now my conviction, that psychic abilities can best be spotted in the realm of the abstract rather than in the concrete, and the co-ordinate as well as psychometric probing, fit very well into this. The experiment has had a final outcome which I dare not even mention and stunning it is. But it is also something



Day	Month	Year	Time	Place
1	Jan	1930	10:00 AM	San Francisco, CA
2	Feb	1931	10:00 AM	San Francisco, CA
3	Mar	1932	10:00 AM	San Francisco, CA
4	Apr	1933	10:00 AM	San Francisco, CA
5	May	1934	10:00 AM	San Francisco, CA
6	Jun	1935	10:00 AM	San Francisco, CA
7	Jul	1936	10:00 AM	San Francisco, CA
8	Aug	1937	10:00 AM	San Francisco, CA
9	Sep	1938	10:00 AM	San Francisco, CA
10	Oct	1939	10:00 AM	San Francisco, CA
11	Nov	1940	10:00 AM	San Francisco, CA
12	Dec	1941	10:00 AM	San Francisco, CA



Ever fondly,  
*Ingo*

INTRODUCTION

The history of psychic and parapsychological research, both in the United States and in Europe and the Soviet countries, demonstrates that the psychic event cannot be seen to be operable within the accepted concepts of ~~psychology~~ the psychological image of man. The current event can be seen to be generally logical in terms of time and space (clairvoyance, psychokinesis) and the search for energy and matter (psychokinesis) as well as the search for the demonstration of a psychic event is yet permissible, known laws of physics and assumptions of psychology are more fruitfully approached through astute observation of the characteristics, even though these seem allogical or contrary to given precepts.

Today, it begs the question to deny the existence of the paranormal event, the accumulated literature of which implies diffuse qualities and character beyond the scope of the current scientific paradigm, conform to certain desirable characteristics, and to the field of research is in the best interest of the Consultant.



...in two directions, i.e., within the so-called "out-of-body" ... it would be increasingly difficult ... the Consultant's opinion the parameters ... the differences between the two ... began to ... research procedures.

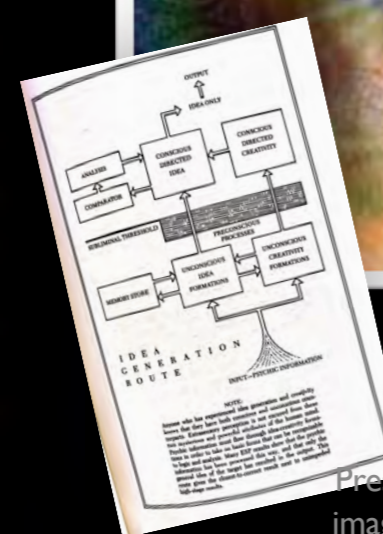
and his writing, have been an oasis in New York and in our time. Undated and somewhat unimpressed by recent reports of an fashion in the aesthetic, he has explored for a lifetime, he is a largely unregarded pillar of New York culture.

Swann has not had more than five exhibitions of his work since coming to New York from the U.S. Army in 1959 for the purpose of "becoming a painter." Since that important decision on vases was made, the artist has produced more than one thousand works of art. Recently he worked about three thousand canvases from the 1960s which he had simply put away while the rest of the art world strolled through the painfully obvious achievements of that period. In some way it now seems perfect that his birth in Colorado's Rocky Mountain and early life in Utah took him to a city so remote all that. He was reputed to be the only artist to receive the only award in the field of research is in the best interest of the Consultant.

Swann's most recent book *Natural ESP* (Bantam/New Age) is one of three he has produced on the topic of parapsychology, a field in which he is better known than in painting. Yet, the two disciplines are a perfect mixture as evidenced in his famous book, a major text on the topic, *Conscious Art*. Swann's association with Dr. Raymond Tyler of the Syracuse University Philosophy Department yielded the Cosmic Art Archive, some two thousand folders on this branch of aesthetics collected between 1911 and 1957. This treasure resides with the artist, and will eventually expose an unimaginably deep reservoir of American and world art history.

Along this same line, Swann worked for a time with J. Edgar Hoover in the SF Bay area, and has diligently continued his own personal ESP research daily for years. However, one does not receive the impression that for him art and metaphysics can be separated. His early interest in the occult and transformational imagery which have been the mainstay of his life as an artist today as they were when his ambition was first answered to them. The rest of the art world is finally beginning to catch up with him, but by the time that is accomplished he will probably be elsewhere.

To Swann's credit, he has not stood atop tall boxes to make pronouncements about his talent or his message. But in the summer of contemporary art, where garbage virtually levels figures, Swann, take care, lest your ambitions cause him to disappear one more in a metaphysical revery — and a good one.



Handwritten notes and sketches, including the words 'MULTIPLE DIMENSIONS' and 'COSMOS'.



Presentation created by Debra Katz - www.debrakatz.com; all images are copyrighted by Ingo estate or others and can not be shared without permissions per copyright law



Painting by Ingo Swann

## WHAT DID I WANT TO KNOW?

- Were Swann's psi talents "gifts" or developed?
- How did he arrive at his discoveries around CRV?
- What did he teach/emphasize compared to his students??
- Was CRV effective?
- Why the lack of RV – training research for past 25 years?
- What role did Scientology play in his psi activities?

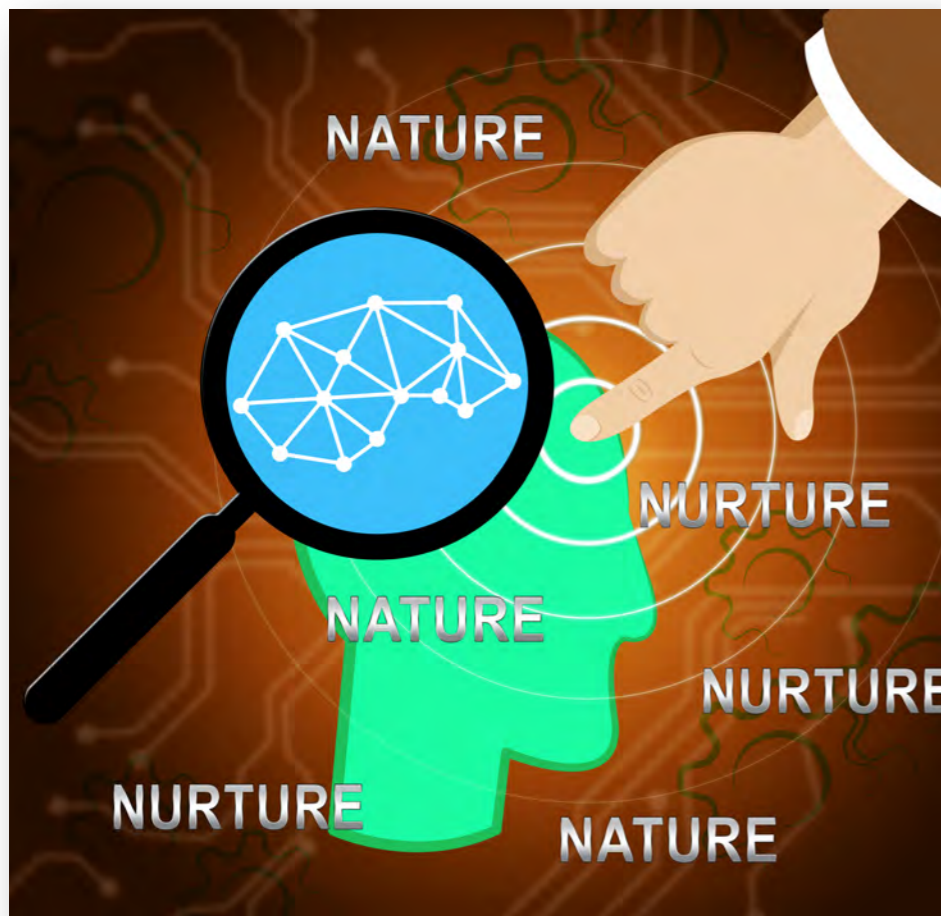


**What if you were raised by apes and never had an formal education?**

Presentation Created by Debra Katz - [www.debrakatz.com](http://www.debrakatz.com); all images are copywrited by Ingo estate or others and can not be shared without permissions per copywrite law

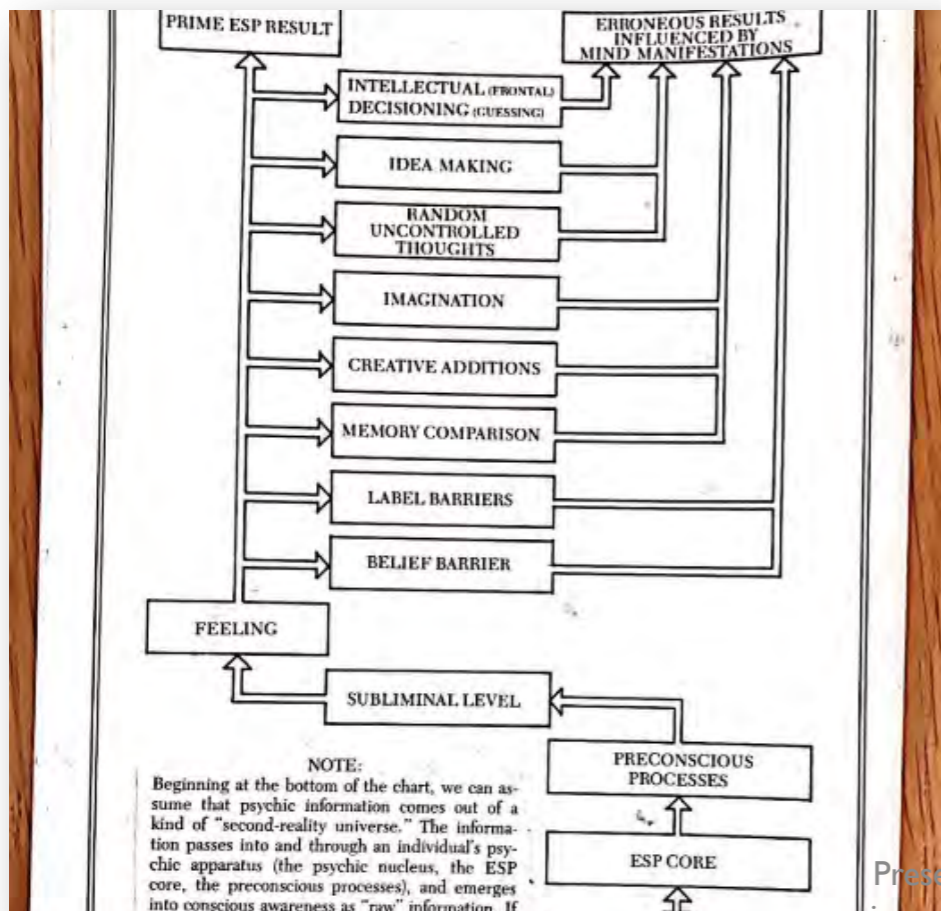
This is not from the archives, just metaphor that we go through life as if raised by apes when it comes to our psi abilities having no guidance.





I asked if the subject would have feedback immediately at the end of each session, so that a learning curve, if any, could be noted. Yes, that was possible -- although no one had thought about the possibility of a learning curve.

Ingo Swann



# THE GREAT DEBATE IN PSYCHOLOGY Extends to Psychic Potential

*Why is it even a question at this point?*

Who is  
unpacking  
the gift  
important  
to?

- Society
- Beginners
- Advanced seeking to improve



# Opening and redefining the word “training”

---

“I wasn’t trained by Ingo, I was exposed to his methods”.  
Joe M.

---

Skip Atwater: “When the unit wasn’t working we were  
training. That’s what the military does”.

---

Ingo’s own learning was not uni directional –  
multidimensional

---

\* The other side of Hella’s brain – Monitoring - Interviewing

---

\* Experiments are learning

---

\* Guidance, support from outside

---

\* Internal, Phenomenological practice – success and failures

---

\* Hundreds of trials per day sometimes, a million in a life  
time.

---

\* Conversations, reading, listening, conferences, etc.

# IMPLICATIONS OF LEARNING AND GETTING CONTROL OVER OUR ABILITIES

## FEAR OF PSYCHIC & SUBLIMINAL INFLUENCE

But THIS topic moves dangerously close to the concept that minds CAN be influenced by invasive psychic signals emanating from others -- and as such clearly touches upon the fear the superpowers of the bio-mind engender. This particular fear was what mostly caused the initial interests of the American intelligence community regarding the mysterious work going on in the Soviet Union -- the possibility of "psychic" mind-control at a distance. And it was in this regard that a "threat analysis" had to be undertaken.

However, so feared is this factor regarding subliminal perception that it is almost completely obliterated. For example, IF psychic signals are perceived by the subliminal subconscious, then it would seem that the subliminal processes would be of extraordinary interest to, say, parapsychologists. However, and to my direct knowledge, subliminal perceptions do not figure very importantly anywhere in parapsychology research.



Psi Development was marginalized, and still is even within parapsychology circles today

- Jeff Mishlove had people try to take away his Ph.D.
- Bob Morris referred to “how to books as “Airport Psychic Books”.
- “development”, “training”, “guidance”, “monitoring”, needs unpacking/redefining



# PSYCHICS AND SOCIETY

But you might wish to consider the following. The modern culture provided no place for psychics except, if at all, in the Fringes. And certainly the modernist mainstreams rejected not only them, but the entire topic of psi and psi experiencing -- and, as well, took active educational and deprogramming measures to ensure the cultural continuance of that rejection into perpetuity.

## Will Psychic Wars Erupt In the Nineties?

Elgin's war scenario begins with what he calls the "Great Nuclear Blackmail of 1984," when Third World terrorists devastate New York with a nuclear device and warn that other cities will be destroyed if the United States does not make a quarter of its gross national product available to starving peoples of Africa, Southeast Asia, Latin America, and India. Unrelated guerrilla bands

compound the American dilemma by demolishing a number of nuclear power plants. A nationwide "energy crash" ensues, resulting in economic stagnation and social turbulence and the extreme polarization of political views.

On the one hand, technological materialists, supported by a majority of Americans, maintain that only by isolation from other nations can the United States remain afloat. On the other hand, there are what Elgin calls the "transformationalists." Based largely in the Southwest, they



All social freedoms are lost, and eventually the brain-altering psychotechnologies are turned on all dissidents, whether they have transformationalist tendencies or not.

In Elgin's second scenario, we find the nation choosing the beliefs and methods of the transformationalists, sharing its resources with the developing world, and concentrating on solving the more spiritual, inner problems of mankind.

While simplifying the material aspects of life, the nation encourages the development of each individual's capabilities—especially psychic talents. Experimentation and diversity are highly valued. In global terms, uneasy but enduring agreements are reached, so that military funding can be used for domestic spending. The nature of "consciousness" becomes the principal preoccupation of scientific research.

In this benign America, psychic talents are used to supplement traditional forms of communication: Capitalists, for example, travel via remote viewing to oversee their business operations.

At first, people fear the threat to their privacy, but they quickly see that another person's

actual thoughts can only rarely be perceived by psychic means; usually only the general outlines of another's thinking can be conveyed telepathically. This in turn leads to greater honesty and closeness between people.

Transformational Americans find God inside themselves and have no need for traditional religious orders. The need for traditional medicine decreases rapidly because healing through psychic means is so much less costly, more readily available—having no dependence on medical instruments—and is far more effective in the treatment of the broad spectrum of human afflictions of both the mind and the body.

—W.S.

## THE CIA'S SEARCH FOR THE PERFECT AGENT

### ESP is for espionage

By JOHN L. WILHELM WASHINGTON

Four years ago officers of the Central Intelligence Agency and National Security Agency participated in a series of unusual experiments run by the Stanford Research Institute to prove or disprove claims that certain people possess psychic abilities. The results, as reported by SRI, were astonishing.

The SRI investigators were physicist Hank E. Puthoff and physicist E. T. Targ. They set out to demonstrate to their CIA sponsor that two subjects, a male psychic named Ingo Swann and a middle-aged businessman (whose name was withheld), could describe distant locations merely by knowing which geographic coordinates to "lock at."

Some parapsychologists call this alleged ability "astral projection" or "out of body experience." Puthoff and Targ prefer the term "remote viewing."

According to their report, a "rigorous test under control of the sponsor" was conducted to check such startling claims. It was called Project Scanlon. The geographic coordinates of target sites chosen for security, transmitted to a CIA scientist in Mexico Park, Cal., who then presented them to the subjects.

#### Psychic spying

In one case Ingo Swann described and sketched with reasonable accuracy a target island in the South Indian Ocean.

In another instance Pat Price gave a remarkably accurate description of what could be taken from a supposedly secret underground



Sister Lisa's Spiritual Reader, on Third Street, where you'd expect to hear of 'astral projections.'

SRI report. In addition to giving its coordinates, Price described this installation in minute detail, including names of buildings, rail

#### Project Bullpasture?

No such luck. Just a sparse hillside, a few flocks of sheep, and lots of droppings. No "unconventional storage areas," no computers, communications equipment or "Army Signal Corps" personnel, as reported by Price. The only "code word" was the name of the place, Bullpasture Mountain.

Under the circumstances it seems that SRI's Project Scanlon appropriately be named Project Bullpasture.

#### Wasting through all the claims, conflicting reports, and deliberate misinformation is usually business as usual. Much of the research is classified or buried behind

described a theory of psychic functioning called "mitogenetic radiation" which has been discussed publicly for years and largely discredited by others in the field.

Counted by others in the field.

Research Projects Agency (DARPA) sent a team of consultants to SRI to see if such claims rated. The consultants concluded that SRI's work with Geller had been conducted with "uncredible sloppiness." And Geller was largely discounted as merely an extremely facile conjurer.

On the surface, all the government interest in parapsychology strongly supports the "believers" in their debate with the skeptics. Price's apparent hit on the alleged secret military installation in Virginia is particularly impressive—until one asks other government people finding the test: "Did you ever check it out?" The answer is "No."

So on Sunday, March 11, with compass, topographic maps and aerial photographs in hand, I drove to an area some 125 miles west-southwest of Washington, the site identified by the coordinates given in the SRI report. A NSA official and his two sons accompanied me. From all the secrecy surrounding this test we had expected to discover the base camp of an extraterrestrial scouting party or center for World War III.

#### Project Bullpasture?

No such luck. Just a sparse hillside, a few flocks of sheep, and lots of droppings. No "unconventional storage areas," no computers, communications equipment or "Army Signal Corps" personnel, as reported by Price. The only "code word" was the name of the place, Bullpasture Mountain.

Under the circumstances it seems that SRI's Project Scanlon appropriately be named Project Bullpasture.

When told of the results of our hike, James Folio, the Navy pro-

# The Early Years Spontaneous Experiences, no Control

psychokinesis and astral projection. Although a uniquely talented artist, Swann derives his renown from his abilities in out-of-body experiences (OOBE).

**A**s Swann remembers it one of his first experiences with this unusual gift occurred when he was 3 years old and was about to have his tonsils removed. The anesthetic had been administered when the youngster noticed something strange. Instead of falling asleep, the young Swann sensed he was moving out of his body. From this vantage point outside his body, he could watch the whole operation. He saw the doctor's knife nick his throat, then he watched as the extracted tonsils were placed in a jar and hidden behind rolls of paper. When young Ingo awoke, he complained that his throat had been cut. He demanded his tonsils as a souvenir, but the doctor refused, telling the child they had already been discarded. The boy, as Swann now recalls it, said, "No you didn't. You put them over there behind those things."

Later in his childhood, Swann would allow his mind to follow the paths of underground ores to the surface in the mountains of his native Colorado. This game of his childhood has found practical application, for Swann now exploits its commercial potential by using it to locate petroleum. Although he is not the only person using this unusual method, he is able to profit from this avocation.

When he reached adulthood, Swann

plant anyway.

The boyish-faced Swann next would be shaken slightly by his encounter with Mercenary, a silver-grey chinchilla. Ingo kept this exquisite rodent as a pet. One



**"A stocky, youngish man, Swann is a prominent figure in present day parapsychology."**

Presentation Created by Debra Katz - [www.debra Katz.com](http://www.debra Katz.com); all images are copyrighted by Ingo estate or others and can not be shared without permissions per copyright law



s dedos so-  
scribí a  
raza  
que  
n-  
e-  
e  
a  
a  
o-  
la  
tida.  
cuello  
ese mo-  
s dedos. No  
de técnica estaba



You will have to take my word that I had never considered becoming a "psychic" myself, and never expected that I would or even could.

I certainly had never even dreamed that I could be an experimental subject in a parapsychology lab or be INVITED to become one. Indeed, I had reasons NOT to do anything of the kind, reasons I'll review at the end of this chapter.

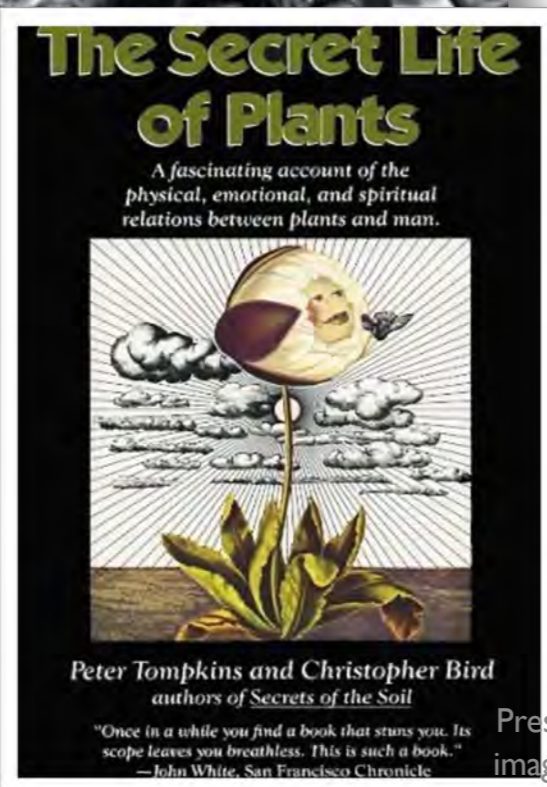
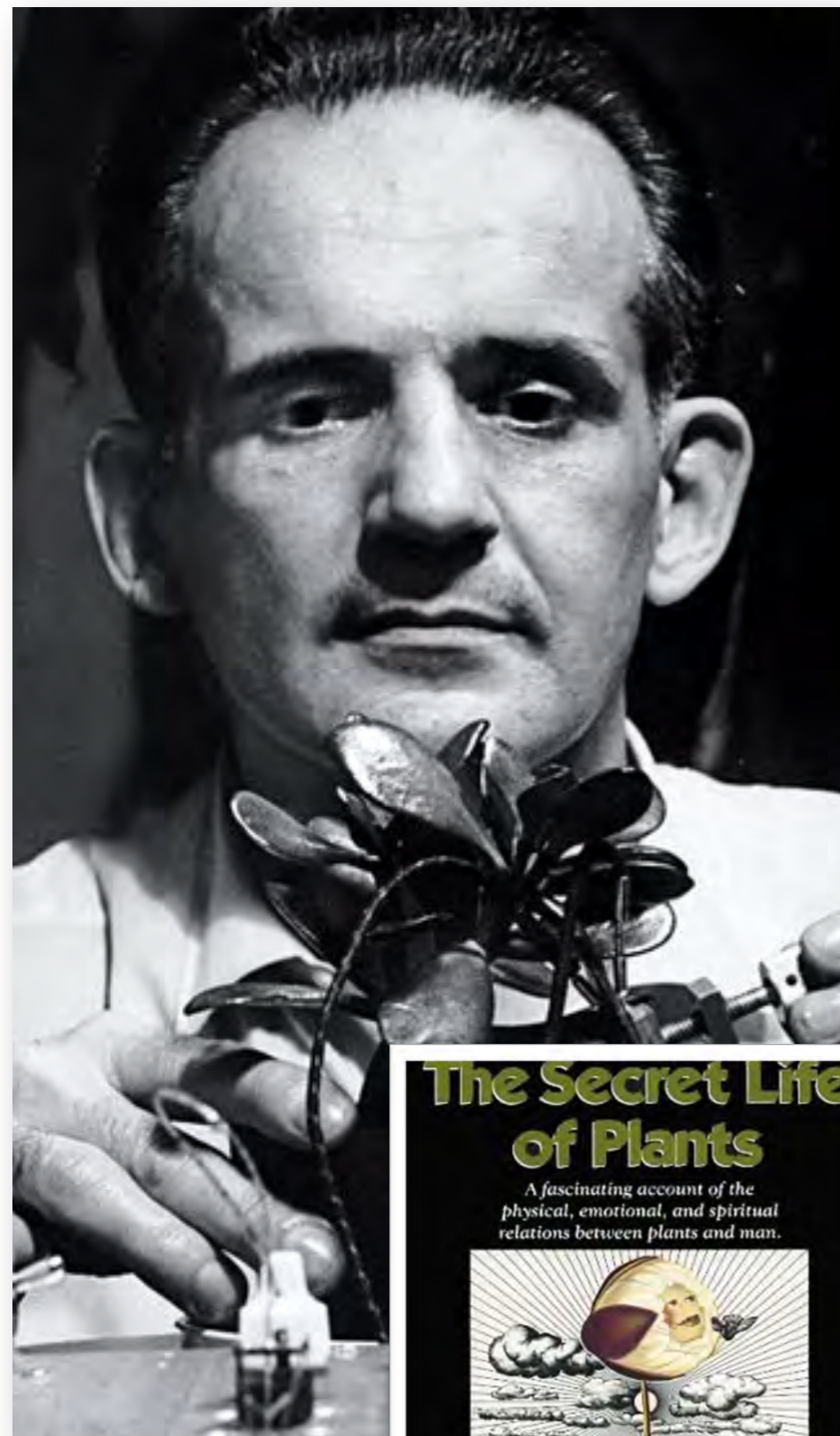
But then came the month of July, 1971.

During the summer heat of that month, a young couple, Bert and Sherri McCann (since divorced), and a group had come to Zelda Suplee's apartment and office on Fifth Avenue and Eleventh Street near Greenwich Village in New York.

INGO DIDN'T EXPLORE  
HIS ABILITIES UNTIL AGE OF  
37



First, photographic evidence in friends bedroom, Next, intro to Cleve Backster



Backster smiled. "YOU said it, I didn't. Try another kind of harmful thought."  
So I thought of putting acid in the plant's pot. Bingo! But the same "learning curve" soon repeated itself.  
Now I already understood in my own "reality" that plants are sentient and telepathic, as all plant lovers know who talk to their plants.  
But that plants could LEARN to recognize between true and artificial human intent came as a thunderbolt!  
Among all this astonishment I came across the concept of the "learning curve" which ultimately was to play THE feature role in the development of remote viewing.

But Backster was moving on. "Do you think you could influence some kind of metal or chemical?"  
"I don't know how to influence anything. But I could try."  
So for several weeks I went to the Times Square lab to try to zap metals and chemicals -- and the march of what I was unknowingly being sucked into moved into October, 1971.

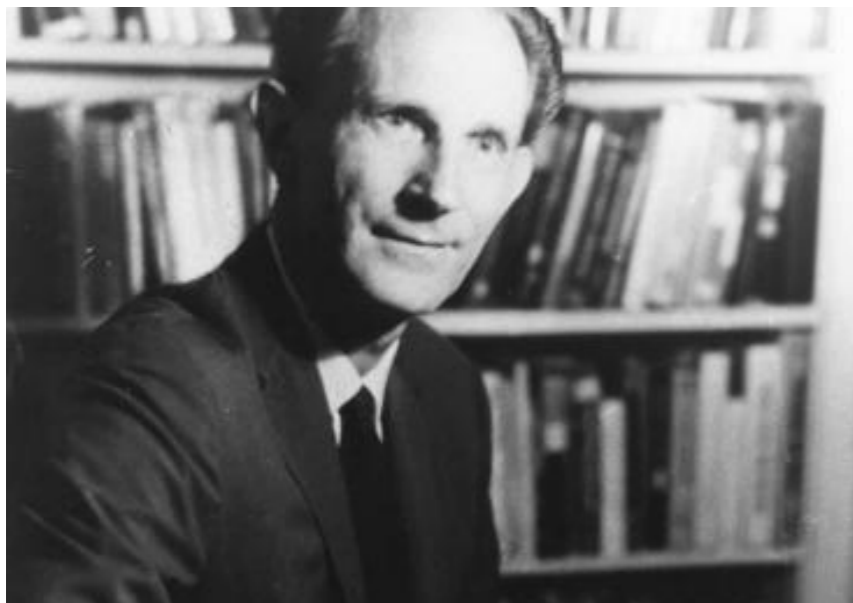
## Experiments with Backster and Graphite

Without thinking much about it, Backster and I began referring to these "beams" as "probes." And to my knowledge, this was the first time that the term "psychic probes" came into use. We quickly abandoned the term "psychokinesis" (mind OVER matter) when Backster asked me to describe my feelings and perceptions.

These, I described, consisted of an awareness of interacting WITH the graphite, not impacting upon it. The very great difference between interacting and impacting will become more clear in chapters ahead.

Thereafter we did a great number of experiments in which Backster told me when to interact with the target and when not to, when to think hot or think cold. These failed some of the time as all experiments do.

But over time, the "directed hits" became more frequent --



INGO'S TRAINING – few months prior to Joining the ASPR in 1972

---

# Ingo's Learn Curve

---

My only remaining question concerned how one was to know if the results were obtained by OOB perceptions, or by some kind of clairvoyance or telepathic contact with the mind of the person who had set up the targets.

This was to be accounted for because the subject in the out-of-body state was supposed to indicate whether the sighting was from the south, north, east or west. Sometimes certain aspects of the targets could be seen only from one of those directions.

The first sessions of the experiment would permit a lot of "trial runs" so that the subject could get used to the affair, and which would also permit Janet to accumulate a lot of baseline brainwave data.

Osis also hoped that I would participate in a number of other kinds of experiments.

I asked if the subject would have feedback immediately at the end of each session, so that a learning curve, if any, could be noted. Yes, that was possible -- although no one had thought about the possibility of a learning curve.



# Ingo had a decline effect.. Until he figured out sketching would solve the problem

But, as has already been mentioned, the first practice trial had somehow been a success. I was later to identify this as the "first-time effect," often experienced by gamblers, etc.

In our working sessions thereafter, the "decline effect" soon set in, and if anything I only "got" bits and pieces of the targets. So the experiments got harder and difficult because failure was more common than successes. I had to practice not agitating my head or body since this disrupted my brainwaves. I thought my head must already be disrupted because I had agreed to do the experiments.

At some point thereafter, I got to wondering why all of this had gotten harder rather than easier. So after a failed session, I decided to have another look at the experimental setup to see if I had missed something.

At first I could see nothing amiss or wrong. So, during the next session, I examined my own behavior while attempting to float up and see.

It was thus I discovered that I was having difficulty regarding a very usual aspect of the experimental setup.

I was having trouble with, of all things, articulating what I thought I was seeing into the microphone and tape-recorder. I found I had to stop "seeing," and think about how to say what I felt I was "seeing." Then I had to verbalize it.



Photos by Julia Tuohetuk

## INGO SWANN

Parapsychology's Most Popular "Guinea Pig"

He is linked with some of the most fascinating laboratory demonstrations of psychokinesis and astral projection.

by Martin Ebon

"Just call me an explorer of metacosy consciousness," Ingo Swann quipped.

A bit long for the occupation blank on a BankAmericard application, but it certainly is an accurate job title for

# Janet Mitchell: Chapter one of OBE Book



Mitchell says she met Swann in fall 1971, a few months since he had been “intensely” practicing what he referred to as “exterior vision”.



He practices for about 3 years on his own before he felt the ability was constant enough to operate under laboratory conditions. He was also curious as to how his brainwaves worked when doing this successfully...



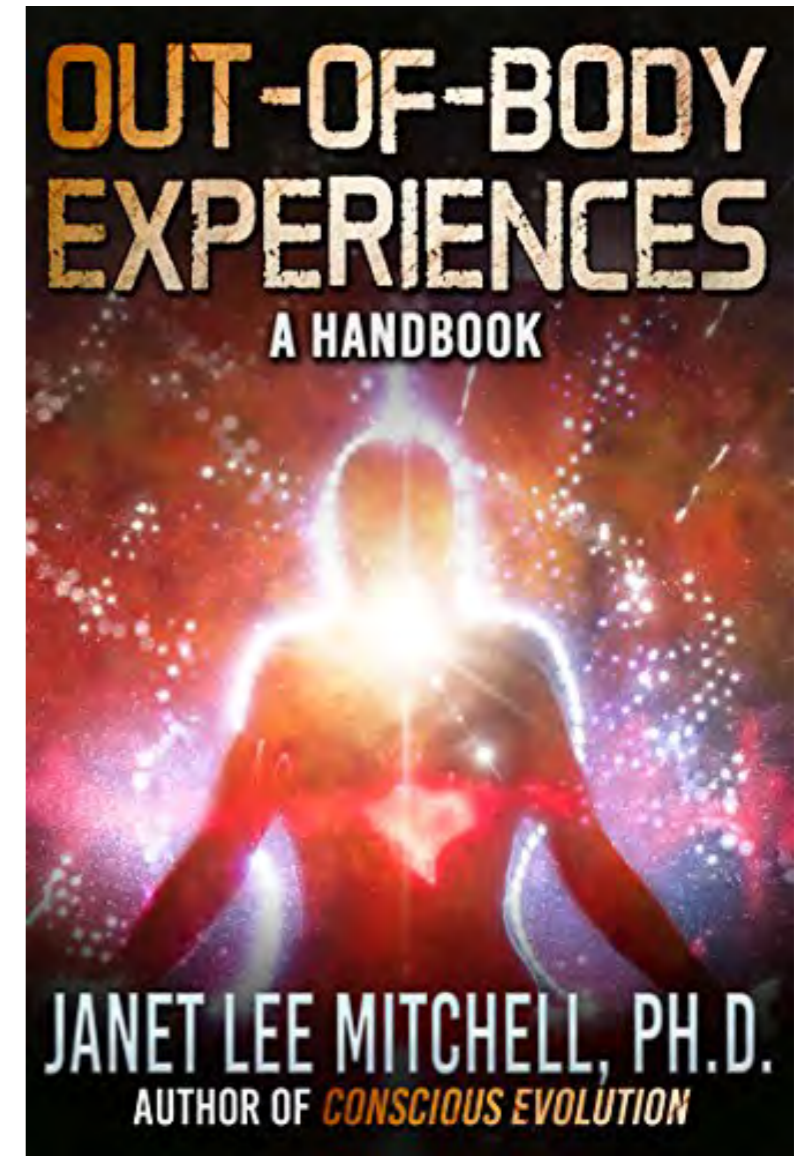
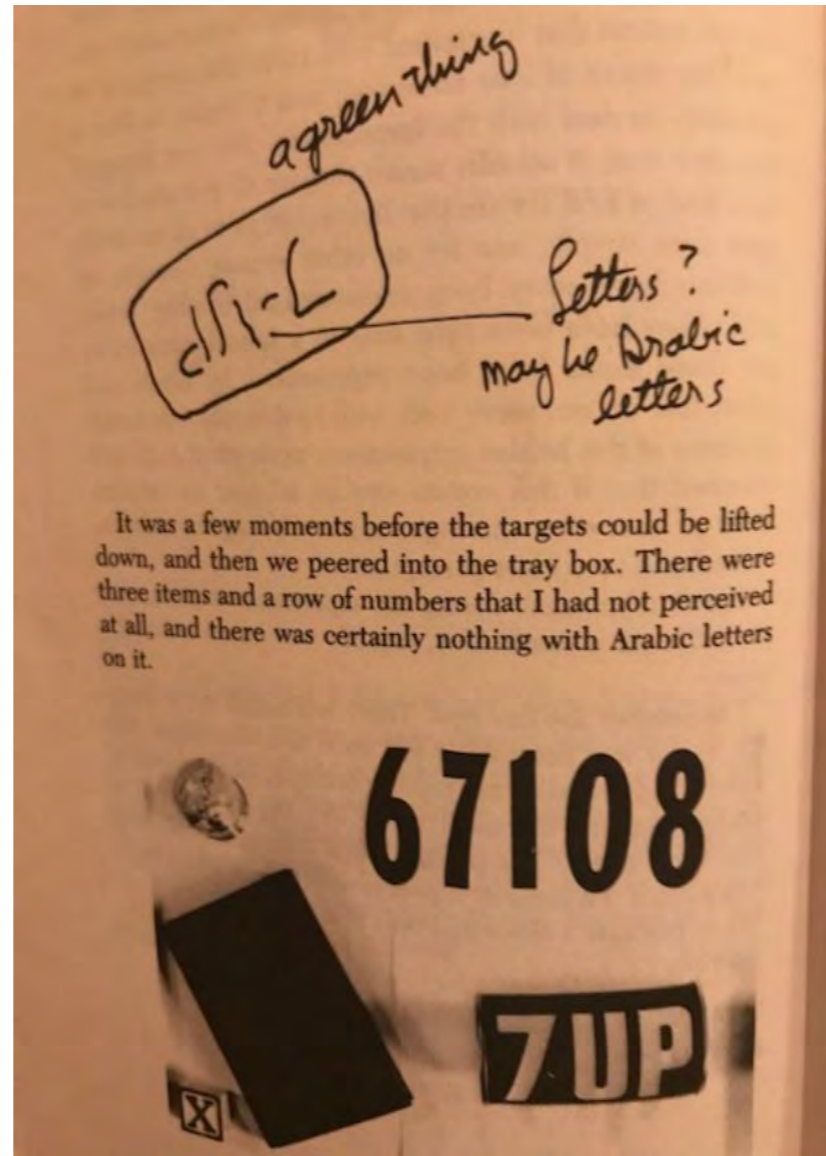
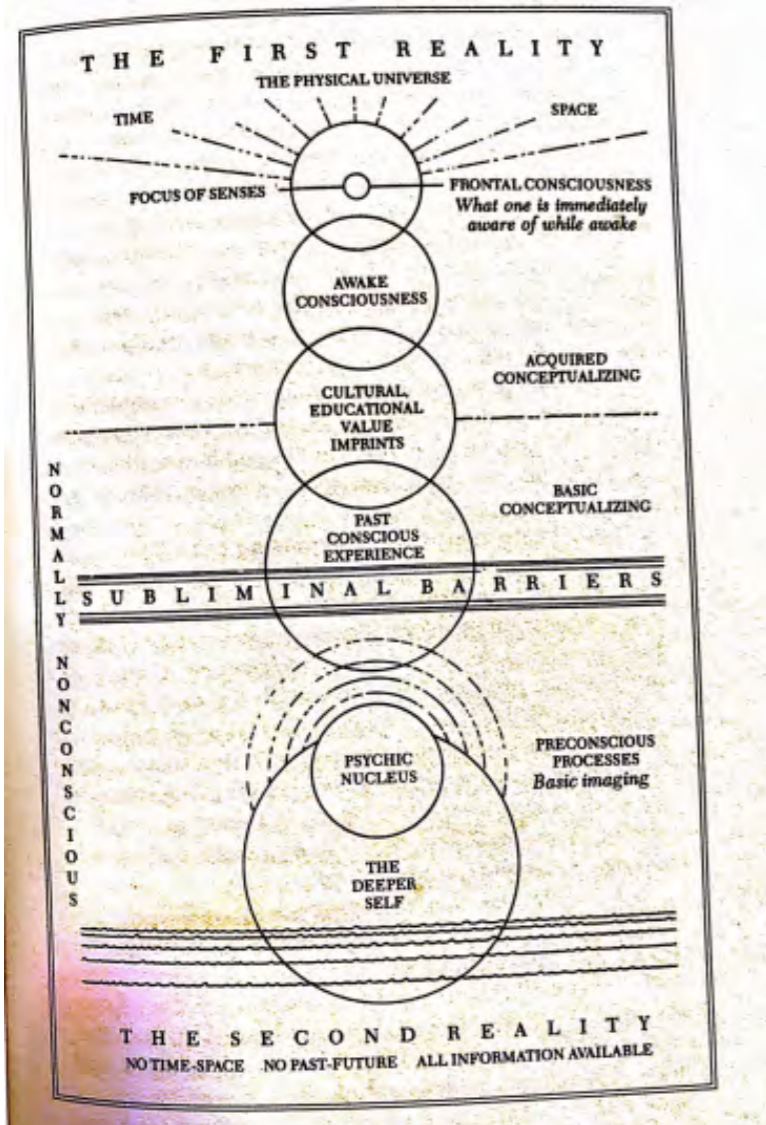
She writes, “there were multiple areas of confusion for him at this time. Sometimes his vision would be white; sometimes black. He told me once that for 9 days he kept getting back into his body upside down. In this condition, his vision would be upside down, then everything would collapse, turn black, and then turn to normal vision.



“When he was sharpening his ability to see at a distance, he would decide to place his vision or a part of his consciousness at some public place and note down details he perceived there. When he traveled in this way there was no apparent means of navigation. He simply decided to go someplace and suddenly found himself there. Later he would actually go to these places to see if his notes were correct. For example he would identify materials in a store display, or examine architectural details of familiar buildings”.

Mitchell: Swann has said the stages in his development went something like this.





# EXAMPLE OF OUT OF BODY SKETCH BY INGO SWANN NATURAL ESP



# Page 194 – DISPELLING THE MYTH OF PERFECT PSYCHICS

\*But here I must caution that my picture drawings were not completely exact regarding ALL of the elements on the target trays. However, enough of the major elements were exact enough to permit the matching.

\*I enter these comments here because of the myth that ESP perceptions can be as perfect as eye vision. I will discuss much more regarding this myth in chapters ahead -- for it was to become a vital component of tutoring regarding controlled remote viewing.

# PSYCHIC ENVY



Rather, I mention it here because it was the first time I experienced even a possible hint of envy -- and bigger and better examples of which I was to experience in the years ahead, both in subtle ways and in ways no one bothered to conceal.



And some of those who didn't bother to conceal their envy/rage, or whatever it was, were some noted parapsychologists themselves.

And the whole of this envy constituted discrimination and persecution of noted psychics, even if subtly deployed behind the scenes.

## Mind probing

- But Haraldsson's face had turned somewhat pale. "Does this mean you can READ OUR MINDS, TOO?" he asked.
- And here I had inadvertently tripped across the most feared of the hidden wires in parapsychology research -- MIND PROBING.
- I hadn't done anything of the kind, of course. I did NOT say in my responses that I was telepathically probing their minds, just that they were confused about which way to go next.

# Mitchell's statements of Swann



There was definitely a learning process in Swann's identifying the platform targets. These experimental efforts may have been tried for one or two days and the results cannot be expected to be as good when there is no time for getting accustomed to the new task or learning to adjust the vision under the various circumstances.



Many days were spent helping him learn how to improve his vision. For instance, he might just want to see lighted targets on a five-color machine called an ESPtester.



He had trouble with color discriminations between white and yellow, and blue and green.



One time he was able to discriminate purple stripes on a black background.



When he was not concerned about color perceptions, he was sometimes only concerned with brain wave feedback in different frequency bands of activity to ascertain how his exterior vision might be improved.

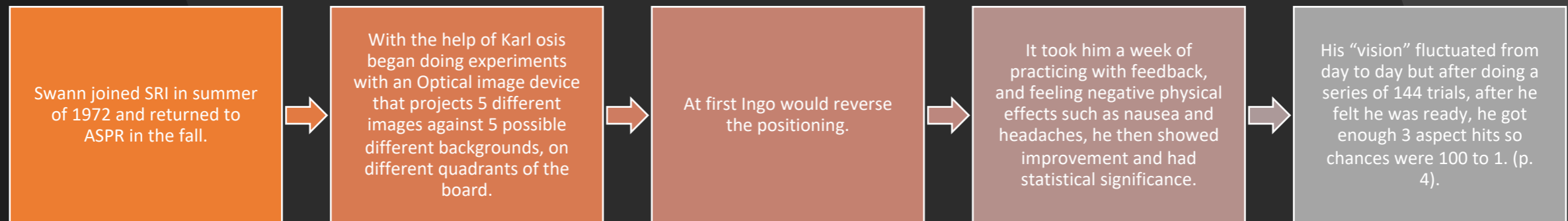


We always tried to cooperate to give him any help he felt he needed.



Mitchell writes, "I feel that one should change experimental conditions as one continues but not quite so radically as we did."

# Optical Image Device



## What have we learned Mitchell's statements, corroborated by Swann himself?

- From the above it is clear that Swann went through a development process. There was a learning curve, It also showed his abilities were not always consistent. When he did a new task he needed to get used to it. What does this say about research? How often are participants given a chance to get used to conditions for a week at a time, or have adjustments made based on what they need or are asking for? This also shows he practiced on his own before even coming to the lab.



# Is Ingo Swann more dangerous than a nuclear bomb?

## April 21, 1973 Time Magazine



### Psychic Power: The Next Superweapon?

By William K. Stuckey

“...In the 1990s a civil war may erupt between the nonpsychic majority and a Palestinian-like band of psychic radicals . . .”

Duane S. Elgin is a long-range-policy analyst, or “futurologist,” for the Stanford Research Institute, the influential military/industrial/scientific research compound in the San Francisco Bay Area. At the age of 33, he is within striking distance of the top of his profession. He has helped prepare studies on the twenty-first century’s ecology, transportation, population, and social sci-

entific concerns for such clients as the President’s Commission on Population Growth and the American Future (headed by John D. Rockefeller III) and for the National Science Foundation.

Elgin is also a frightened man, as indicated both in conversation and by a futurological projection that he wrote and showed only to a number of his

peers. The document speculates on the emergence of extrasensory politics and of a potentially dangerous psychic technology. Some of its more breathtaking assumptions and predictions are:

□ That psychic functioning is a normal, although long-repressed and not easily utilized, characteristic of the human race. It includes the powers of clairvoyance, or remote viewing; of



CLOCKWISE, FROM LEFT: At Durham’s Psychological Research Foundation, Robert Morris displays test in which subject outside of room “influences” movement of a cat; sensory-isolation and telepathy experiment at Maimonides

Medical Center in New York City. Artist and Psychic Ingo Swann with painting completed after his “out of body” adventure in outer space; gerbil in tests for precognitive powers at The Institute for Parapsychology in Durham, N.C.

SUPERPSYCHIC?  
SUPERMAN?  
YES AND NO!

I was a genius, an experimental innovator, an inspired mystic, and could travel out-of- body anywhere I wanted to go.

The appellations of "superpsychic" and "superman" (with X-ray eyes, no less) now first surfaced for the first time.

Some of this fabulous gossip held that I was the best thing which had ever happened to parapsychology. I shuddered on hearing this, for I well knew what parapsychologists would think of it.

The only part of this which was partly true was that I loved designing innovative experiments. Although I couldn't have known it at the time, this particular trait was to stand me in good stead in the future.





# CONSULTING CONTRACT

This is a CONTRACT by and between STANFORD RESEARCH INSTITUTE, hereinafter referred to as SRI, and Ingo Swann, hereinafter referred to as the Consultant.

IT IS HEREBY MUTUALLY AGREED AS FOLLOWS:

- The Consultant will provide such consulting services in the field(s) of Biofield Measurement as are from time to time expressed in writing to the Consultant.
- Consultant agrees to:
  - promptly disclose to SRI all discoveries, improvements, inventions, and proprietary data conceived or developed by Consultant in carrying out his consulting services under this agreement, and he agrees to execute such documents, disclose and deliver all information and data, and do all other things which may be necessary or in the opinion of SRI reasonably desirable in order to effect transfer of ownership in or to impart a full understanding of such discoveries, improvements, inventions, and proprietary data to SRI or its nominee and to no other. Consultant agrees to comply with every reasonable request of SRI, its nominee, or the representative of either, for assistance in obtaining and enforcing patents. Consultant clearly understands that termination of this association shall not release him from his obligations hereunder regarding discoveries, improvements, inventions, and proprietary data; provided, however, that time actually spent by him in discharging those obligations after termination of his association shall be paid for by SRI at a reasonable rate. It is, of course, understood and agreed that Consultant accepts no responsibility for any out-of-pocket expenses, fees, or costs incurred or involved in the preparation, filing, or prosecution of any application for patent or in the prosecution or defense of any litigation involving the same and that he shall be reimbursed by SRI for any expense to which he may be put at the request of SRI or its nominee hereunder;
  - not publish or make known to others the subject matter or any proprietary information resulting from performance of this contract, without first having obtained the approval of the President or a Vice President of SRI.
- Consultant shall at all times be an independent contractor and not an employee of SRI. SRI shall neither exercise nor have any right to control the Consultant as to the means by which Consultant's work is to be accomplished. Consultant shall be responsible for all income and other payroll-associated taxes. In the event of a foreign assignment where the law requires the withholding of taxes and payment by SRI, Consultant agrees that SRI may withhold from his compensation for that purpose.
- SRI will, upon receipt of monthly billings (in the form on reverse side), compensate the Consultant at the rate of Ninety dollars per day (\$ 90.00/day for time devoted to work performed in accordance with Item 1 and will reimburse the Consultant for such travel and other expenses as have been authorized. commencing August 14, 1972 and August 21, 1973
- This contract shall be for a term of 30 days, ending August 21, 1973 unless sooner terminated as hereinafter provided. Either party may terminate this contract by giving the other party written notice at least Thirty (30) Days prior to the effective date of termination.

Date 21 August 1972

Ingo Swann

# Stanford Research Institute (SRI) - 1972

Presentation Created by Debra Katz - v images are copywrited by Ingo estate or on have shared without permissions per copy write law

He decodes the short ones for each con- g. "short." and offers

nts in long- w York to carried out rs were Dr. ll Targ of te, Menlo nd experi- .M. Kogan ciety of Ra- omunica- formed in uthoff and e, parapsy-

d by the means out- argue that ore to the the study ons as tele- nication), ce remote n (knowl- d through thokinesis with the gy often is instance, mmunica- ally have

## It's the way of all nations: if you've got a good idea, see how it works for war first



SRI's Targ and Puthoff: Time can go backwards if it darn well wants to

they're top secret." She wraps her lab coat tighter. "And it's not just limited to the U.S. or the Soviet Union. I think every country is involved in this, because it's a perfectly magnificent way, if it

HELLA HARRMO

There a this claim to make time and gist who are over in the U puts our ESPion ine a s fixing h space site thinking and the some sort Somebo out in left governme et psychic The forew notes that cal research Soviet Un ent in ap don't und J.B. Rhinc ing or oth carried ou cal eviden reality of th The -Dr America's man who b ualist parlo to fifty yea piling stati

# From Ingo's Scrapbook

---



# IMPORTANT PROPOSAL FOR RESEARCH FOUND IN SRI PAPERS BOX 1, 1972 entitled "Proposal for Research" to Ken Kress

"Swann Demonstrated an ability to increase and decrease at will the magnetic field within a superconducting magnetic shield as did Geller. Geller is said to have natural abilities and they state, "Of special interest is the fact that Mr. Swann's abilities apparently were not innate, but rather were developed by a set of training procedures. Therefore, during the course of the study, information as to possible training procedure for the development of such abilities will be compiled"

"Such a paradigm is known by psychologists to constitute an extinction paradigm well suited to eliminate correct task performance. Therefore, real-time feedback as to success or failure of a given task will be made available to the subject whenever possible. Such feedback should provide the subject with reinforcement appropriate for enhancing performance rather than extinguishing ability.

"With regard to overall methodology, we shall employ a strong feedback reinforcement technique. As is now well known, psych energetic experimentation by naive investigators has often followed the paradigm of a large number of trials without feedback as to results until the experiment was over"

# Letter from Hal Puthoff to Ken Kreis 1973 proposing the psychoenergetics program

Of special interest is the fact that Mr. Swann's abilities apparently were not innate, but rather were developed by a set of training procedures. Therefore, during the course of the study, information as to possible training procedures for the development of such abilities will be compiled.

With regard to overall methodology, we shall employ a strong feedback reinforcement technique. As is now well known, psychoenergetic experimentation by naive investigators has often followed the paradigm of a large number of trials without feedback as to results until the experiment was over. Such a paradigm is known by psychologists to constitute an extinction paradigm well suited to eliminate correct task performance. Therefore, real-time feedback as to success or failure of a given task will be made available to the subject whenever possible.

## Ingo Swann

ents, the  
the "tar-  
end, she  
how that  
ry analy-  
changed  
than act-  
mechan-  
subjects,  
conclude  
and that  
"

occurred  
ental pat-  
er notes,  
f" in her  
riation in  
idler and  
with the  
he dyno-  
n. While  
er, Ingo  
within the  
cated. As  
it."

"Mean-  
ewis had  
adout for  
nos, and  
looked,  
ating no



**"Indeed, he is as much the  
researcher as the researched."**

Presentation Created by Debra Katz - [www.debrakatz.com](http://www.debrakatz.com); all  
images are copyrighted by Ingo estate or others and can not be  
shared without permissions per copywrite law

could  
A  
releas  
with  
"in  
shield  
paren  
increa  
netic  
magn  
say th  
"unlik  
with t  
WH  
done,  
when  
tally,  
mos  
penet  
shield  
seat o  
from,  
physic  
been  
asserts  
terms  
of ma  
seat o  
does c  
observ  
scious

”I’m satisfied in my own mind this is a  
human potential, not an individual  
potential”

Ingo, 1973

## Page 279 – Ingo Helped form SRI's mission

\*Puthoff had been thinking of the term PSYCHOENERGETICS, so I suggested that we spend a few hours erecting a new box-and-flow organizational chart based in that concept -- and relate that concept to the multidisciplinary approach.

Puthoff made his daily telephone session short when we got to SRI. We then got some paper, pens, 3 x 5 index cards, retired into an unused conference room and spent several hours envisioning a completely new field replete with novel nomenclature.

# Things discussed in early meeting



STANFORD RESEARCH INSTITUTE  
MENLO PARK, CALIFORNIA 94025  
(415) 326-8200

NOTES of 2 JANUARY 1973 RESEARCH MEETING - SWANN, TARG,

## Schedules:

Meetings	10 AM
Cans	11 AM
OOB Colors	1130 AM

## Project Ranking According to Expected Productivity (Swann)

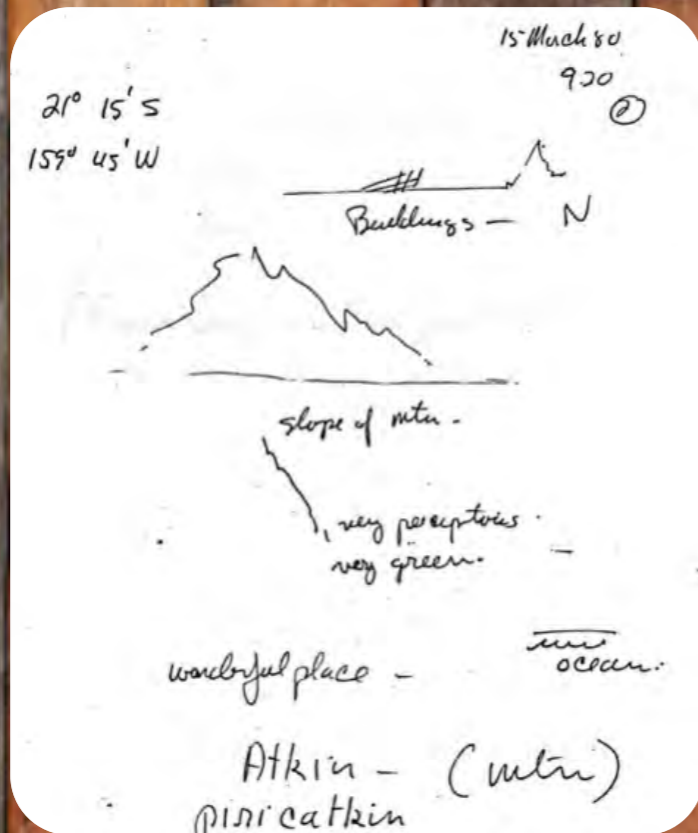
- Psychometric perception
- Electric potential change (PK)
- OOB
- Telepathy
- PK by force
- levitation

## Projects Under Consideration

- Cans
- Stanford magnetometer
- SRI magnetometer
- OOB, colors
- Thermocouple
- Pan balance
- Yeast
- Elements



# 1973 PROJECT SCANATE – INGO'S CREATION



- Macro vs. Micro Abilities
- Conscious control of abilities
- Non telepathic connection
- Latitude-Longitude Coordinates
- Suggested operational capacity

# JUPITER PROBE

17 March 1980

International

## SWANN'S REMOTE VIEWING PROBE OF JUPITER

Subject: I. Swann  
 Monitors: H. E. Puthoff, Ph.D.  
 R. Targ  
 Radio Physics Laboratory

Prepared by: B. Humphrey  
 Radio Physics Laboratory

### SUMMARY COLOR CODE SHEET

#### Atmospheric

1. Storms; wind ●
2. High infrared ●
3. Temperature inversion ●
4. Cloud color and configuration ●
5. Localized climatic phenomena ●
6. Water and ice crystals ●

#### Gravitational

1. The ring ●

#### Surface

1. Liquid composition ●
2. Mountain range ●
3. Crystals ●

#### Atmosphere and Surface

1. Hydrogen composition

#### Magnetic and Electromagnetic

1. The Io hydrogen torus
2. Auroras ●

#### Summary Description ●

(April 27, 1973)

#### Experiment 46

No big sharp noises for the next 1/2 hour please.

6:03:25 (3 seconds fast) There's a planet with stripes.

6:04:13 I hope it's Jupiter.

I think that it must have an extremely large hydrogen mantle.  
If a space probe made contact with that, it would be maybe  
80,000 - 120,000 miles out from the planet surface.

6:06 So I'm approaching it on the tangent where I can see it's a half moon, in other words half lit half dark. If I move around to the lit side it's distinctly yellow toward the right. (Hal - Which direction you had to move?)

6:06:20 Very high in the atmosphere there are crystals, they glitter, maybe the stripes are like bands of crystals, maybe like rings of Saturn, though not far out like that, very close within the atmosphere, (Unintelligible sentence.) I bet you they'll reflect radio probes. Is that possible if you had a cloud of crystals that were assaulted by different radio waves? (Hal - That's right.)

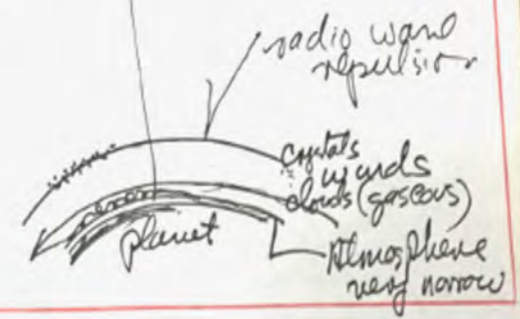
6:08:00 Now I'll go down through. It feels really good there (laugh). I said that before, didn't I?  
Inside those cloud layers, those crystal layers, they look beautiful from the outside, from the inside they look like rolling gas clouds - eerie yellow light, rainbows.

6:10:20 I get the impression, though I don't see, that it's liquid.

6:10:55 Then I came through the cloud cover, the surface it looks like sand dunes. They're made of very large grade crystals so they slide. Tremendous winds sort of like maybe the prevailing winds of earth but very close to the surface of Jupiter. From that view the horizon looks orangish or rose-colored but overhead it's kind of greenish-yellow.

6:12:35 If I look to the right there is an enormous mountain range.

Jupiter probe 28 April 1973 "29132" Exp 46  
 Sherman Swann 100,000 H. Mantle



mountain chain 30,000 ft?  
 shifting sand grains like polished amber  
 - thermal inversion  
 tornado

EXCERPTS FROM SWANN TRANSCRIPT

SECTION CLASSIFICATION	IMPRESSION	TECHNICAL REFERENCES
Chronic	6. I get the impression, though I don't see, that it is liquid.	6. Newsweek, December 3, 1973. a. p. 74
Star and ice crystals	I get the impression that that must be a band of crystals similar to the outer ones, kind of bluish. They seem to be sort of in orbit, permanent orbit down through another layer farther down which are like our clouds but moving fast.	Science News, Vol. 106, September 21, 1974. a. p. 186 b. p. 186
	There's another area: liquid like water. Looks like it's got icebergs in it but they're not icebergs.	Farther down may be frozen water crystals and possibly even liquid water, the Pioneer researchers suggest, although water has never been observed there. c. p. 187

JUPITER ATMOSPHERE MODEL  
 ATMOSPHERE DEPTH TO LIQUID CORE IS 100,000 MI

Labels: IONOSPHERE, TOP OF ATMOSPHERE, CLOUD TOPS, LIQUID HYDROGEN, LIQUID METALLIC HYDROGEN, ROCKY CORE, LIQUID WATER DROPLETS, WATER ICE CRYSTALS, AMMONIA CRYSTALS, AMMONIA HYDROXIDE CRYSTALS.

SCALE EXAGGERATED

Science News, Vol. , February 15, 1975. a. p. 102

Water vapor in the atmosphere of Jupiter—"The first oxygen-bearing molecule identified in the outer planets"—has been discovered by a team of astronomers from the University of Arizona.

# Letter Showing Swanns Care in Research



## MEMO

TO: Puthoff  
Targ

FROM: Swann

SUBJECT: Prerequisites for psychokinetic and brainwave experimentation

DATE: 2 Feb 73

LOCATION:

CC: B. Cox  
E. Jones

1. Considering the division of work-time on the current project, and because we have reached a first platform of results with regard to perceptual experimentation, it is approaching the time when I feel we should engage upon preliminary psychokinetic experimentation.

2. In order to have the possibility of obtaining maximum results from the minimum of time, it is my feeling that the approach to uncovering the psychokinetic impact should involve three areas simultaneously: attempting to create differences in objects through movement of various measuring devices (pan balance, thermocouple and thermopile fluctuations, etc.), preliminary work based upon Backster-type effects with micro-organisms and other living materials, and the manipulation or distortion of photon flows.

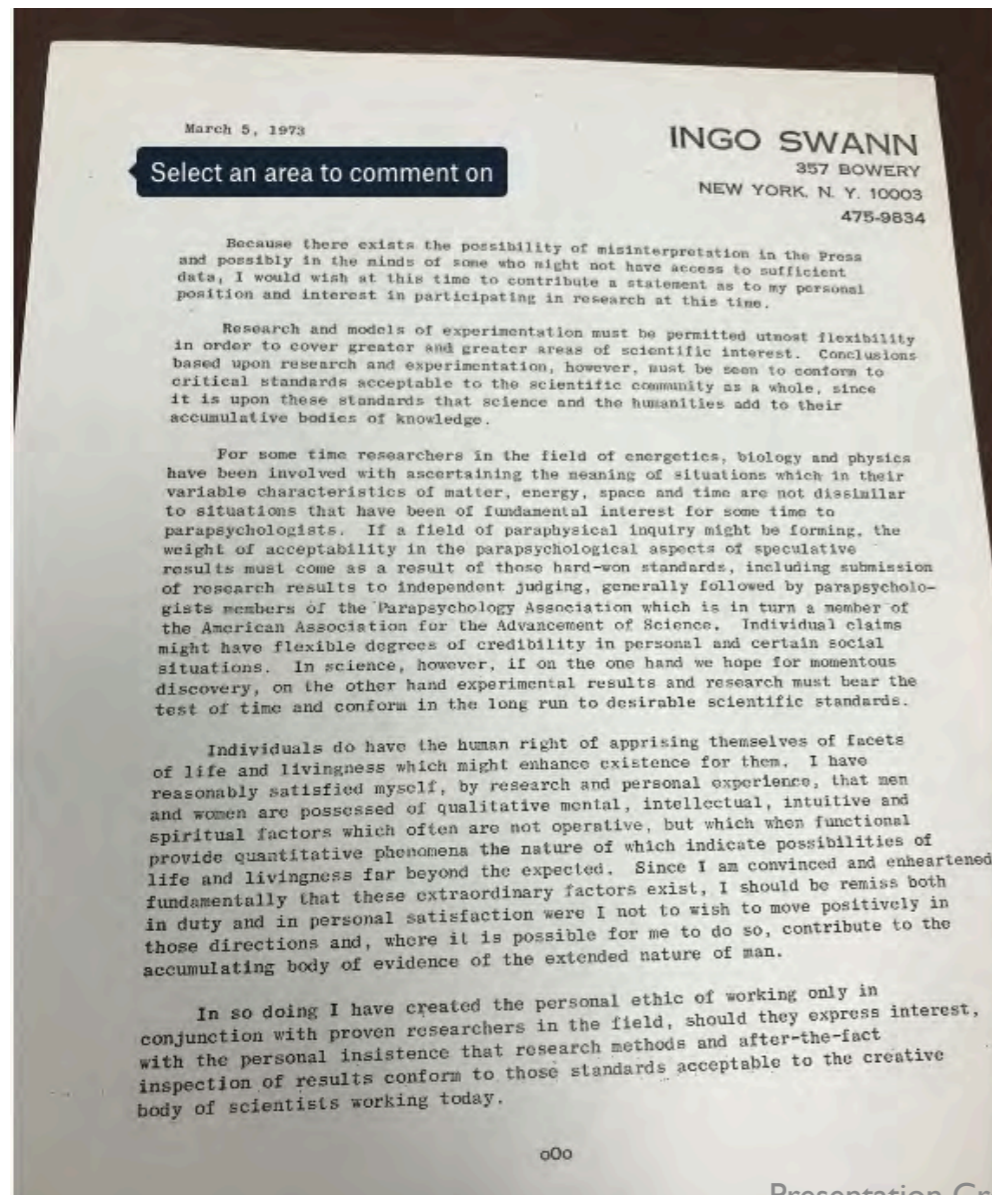
3. A good deal of the possible success to come from such experimentation will depend upon the predictable workability of the equipment involved. It seems to me therefore that all the bugs in recording equipment will have to be worked out before hand, and that equipment and recording expectations (noise) will have to be thoroughly understood and catalogued. It seems equally necessary to have permanent set-ups for each experiment, and that equipment should not be dismantled at the spur of a moment to structure other experiments. Signal/noise relationships must be established beforehand, since to attempt to produce psychokinetic phenomena and be told post-experiment that it was only noise is antipathetic to any good continuation of effort on subject's part.

4. With regard to signal/noise relationships, it can be noted that Life Energies in NY has been researching biofield changes with a subject, and have achieved accumulated positive stable results using a photo-multiplier Amprex Tube 56DUVP/O3. While the noise fluctuates between 20-30 nanoamps, the signal by comparative analysis yields consistent visibility at 5 nanoamps. This is of course an undesirable feedback, and efforts are being made there to reduce the noise of the equipment by lowering its temperature considerably.

5. While it is probable that unexpected and unpredictable results might be forthcoming, research-wise it seems prudent to have some idea of what will be called a result.

6. Regarding brainwave research, I should like to have a setup identical to the Hurt equipment we used last autumn for personal exploration. It is advisable also to begin an organized procedure of mapping waves resulting from orthodox tests in the shielded EEG rooms in order to create a base-line expectation prior to attempting extraordinary tasks.

# Swann Statement commitment to science and humanity



Individuals do have the human right of appraising themselves of facets of life and livingness which might enhance existence for them. I have reasonably satisfied myself, by research and personal experience, that men and women are possessed of qualitative mental, intellectual, intuitive and spiritual factors which often are not operative, but which when functional provide quantitative phenomena the nature of which indicate possibilities of life and livingness far beyond the expected. Since I am convinced and enheartened fundamentally that these extraordinary factors exist, I should be remiss both in duty and in personal satisfaction were I not to wish to move positively in those directions and, where it is possible for me to do so, contribute to the accumulating body of evidence of the extended nature of man.

# Swann tells puthoff what he'd like in report



STANFORD RESEARCH INSTITUTE  
MENLO PARK, CALIFORNIA 94025  
(415) 326-6200

August 10, 1973

Dr. H.E. Puthoff  
Stanford Research Institute  
Menlo Park, California

Dear Hal,

Upon the completion of our recent project in bioenergetics, I should like to express my appreciation for the good co-operation and assistance you have rendered both in personal interchange and in support. There is not much doubt that in a field so questionable as that represented by our subject, it would take much forbearance upon the part of all personnel concerned to bring about any good and significant result. I am appreciative of your determination and for the good offices of SRI.

Although I am preparing an independent report of the progress and results of the project, I should hope that technical reports prepared by yourself include mention of the several data which we encountered: these being the "first time" phenomenon, your coherence theory in psychokinesis, and a description of the psi-analytical theory, although this latter certainly needs much more work. I feel it is especially important, as the data came to indicate, to draw distinction between "micro-abilities" and "macro-abilities," which distinction accounts for the emergence of the dual projects Scanate and Scanex.

The preliminary results of Scanate indicate abilitism under conscious control, and, having been tested by the sponsor, seem to fulfill the mandate of the proposal under which we assumed work. These preliminary successes also clearly indicate that paranormal ability can be researched and developed under stringent laboratory controls, although Scanate, of course, does not fall within the historical definition of such abilities. This is quite beside the point, however, since the purpose of research is to intrude into hitherto unknown realms.

INGO STATED IN BETWEEN HIS FIRST AND SECOND CONTRACTS THAT HE HAD ALREADY DEMONSTRATED HIS ABILITIES – HE WAS NOT THERE TO CONTINUE TO DO SO - HE WAS THERE TO LEARN ABOUT THEM, EXPLORE THEM AND SEE HOW TO IMPROVE THEM.

He felt Researchers had something else in mind.

dell books

PUBLICITY DEPARTMENT

Dell Publishing Co., Inc. / 1 Dog Hammarskjold Plaza  
245 East 47th Street / New York, N.Y. 10017



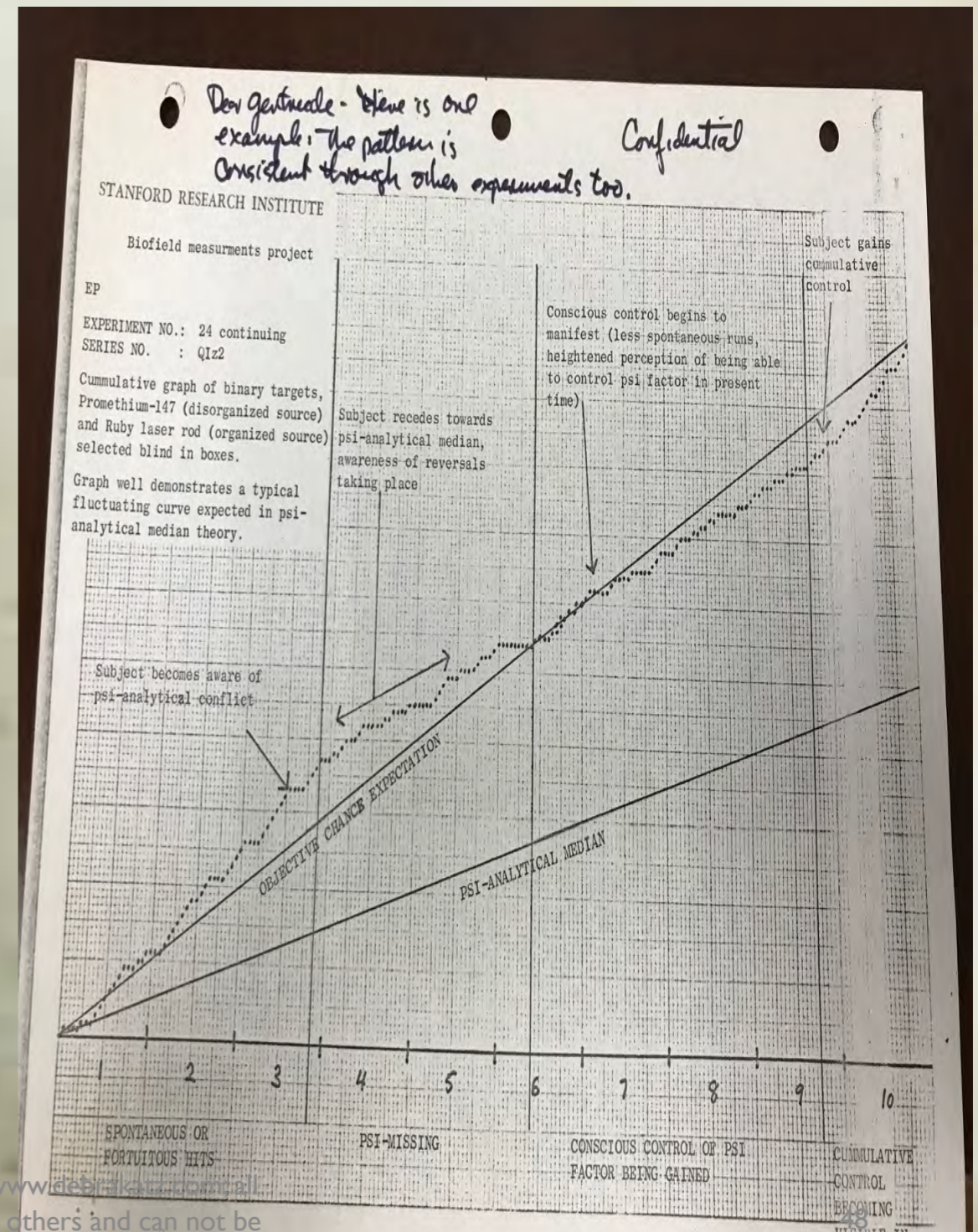
Ingo Swann, author of STAR FIRE, a Dell Original/Eleanor Friede Book.

photo credit: Julia Turchuk

CONTACT: Mollie Fermaglich  
Dell Books  
Publicity Department  
(212) 832-7300

# “LEARNING HAS HAPPENED WITH “CORRECTIVE ACTION ON PERCEPTUAL DIFFICULTIES”.

**SRI CHRONO box #1 - B F-9 (1973) “The experiment was run 5 X 20. Gradual shifts can be observed. Corrective action was taken by the subject on perceptual difficulties, between sessions 3 and 4. Immediate improvement is noted. Learning has taken place. Graph 1 shows learning pattern by run number and accumulation of hits by trials. Graph 2 is included, since the black box experiment of last summer also demonstrated similar learning curves.**



Dear gentleman - Here is one example; the pattern is consistent through other experiments too.

Confidential

STANFORD RESEARCH INSTITUTE

Biofield measurements project

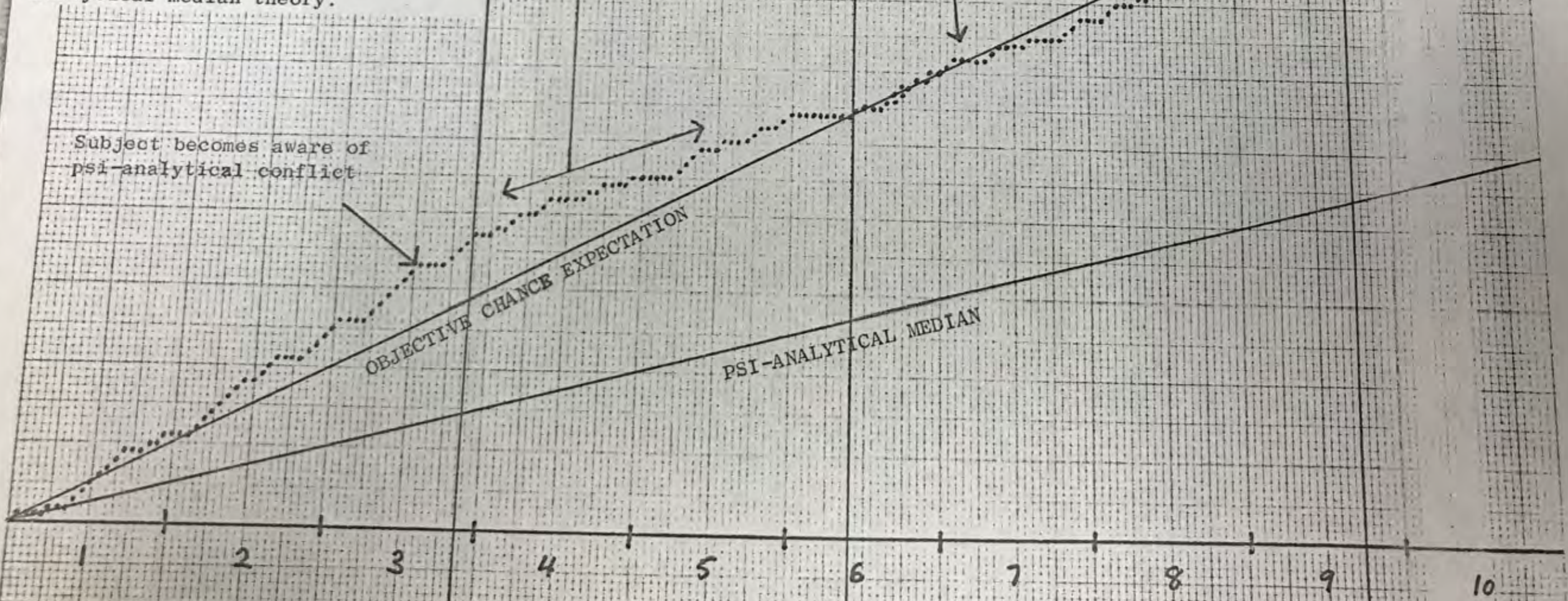
EP

EXPERIMENT NO.: 24 continuing

SERIES NO. : Q1z2

Cummulative graph of binary targets, Promethium-147 (disorganized source) and Ruby laser rod (organized source) selected blind in boxes.

Graph well demonstrates a typical fluctuating curve expected in psi-analytical median theory.



Subject gains cumulative control

Conscious control begins to manifest (less spontaneous runs, heightened perception of being able to control psi factor in present time)

Subject recedes towards psi-analytical median, awareness of reversals taking place

Subject becomes aware of psi-analytical conflict

OBJECTIVE CHANCE EXPECTATION

PSI-ANALYTICAL MEDIAN

SPONTANEOUS OR FORTUITOUS HITS

PSI-MISSING

CONSCIOUS CONTROL OF PSI FACTOR BEING GAINED

CUMMULATIVE CONTROL BECOMING

VISIBLE IN



# ANALYTICS – ABSTRACT SYMBOLS (THOUSANDS OF TRIALS – IMPROVEMENT)

Colors

Letters

Numbers

Luminosity - (flame/no flame, laser)

Quality of functioning of objects

Includes Targets

Displacement

*yellow c*  
*lots of yellow c*  
*black shape -c*  
*simple picture -c*  
*purple or dark*  
*shape more varied c*



# SCIENTOLOGY



*L. Ron Hubbard*

8th March, 1971.

Ingo Swann,  
Clear 2231,  
c/o Bert Salzman,  
117 West 13th,  
New York,  
USA.

Dear Ingo,

I have just received your letter and transparencies of the most unusual and beautiful portrait! The star patterns and designs are very interesting as well as the composition.

With regard to your other projects, I suggest you liaise with A/Distribution Aide, c/o USLO. They sound intriguing.

We will be happy to have you in the Sea Org, Ingo. All the very best.

Love,



RON.



All this would not have been possible had it not been for the unremitting work of our Founder, L. Ron Hubbard.



*L. Ron Hubbard*

January 31, 1973

Ingo Swann  
Stanford Research Institute  
Bldg. 30, Room K1025  
Menlo Park, California 94025

Dear Ingo,

Many thanks indeed for your report and information just received.

Very well done, Ingo, on your progress, and the very best for many more great wins as you proceed in your plans.

Don't hesitate to call if you need help.

You certainly are making huge strides into what is - for Man - a new and amazing field, and we appreciate and congratulate you.

Love,

  
Ron and MarySue



Thank you to  
Coral Corte for  
your research  
help & insights

<https://youtu.be/vge2IDINfh4>

Swann had to  
advocate for  
himself  
to get paid  
equally to the  
researchers

May 18, 1977

Dr. H.E. Puthoff  
Stanford Research Institute  
Menlo Park, California 94205

Dear Hal -

I am afraid that the time has come to advise you that I can no longer mark time while waiting for the project at SRI to firm up, and thus, a little regretfully to be sure, I have to notify you of this.

I'll recapitulate a little: since I am not independently wealthy, and cannot cover my expenses while I am making various excursions to SRI to work for short periods of time, I also have to try to keep various projects alive in New York that do provide me with the majority of my income. I have discussed with you the problems that surround this situation, and long ago I established that I could no longer afford to work at SRI in merely a part-time consultative position. My offer to you was that since I have contributed major work to the project, it seemed only feasible that I should be taken on full time with equitable salary to you and Russell. This tactic would guarantee me bimonthly payments and thus give me a basis to operate from financially, as well as providing full time access to and on behalf of the project. The last four years have definitely established the reality that anything less than this type of commitment leaves me hung up at both ends of my life, financially and creatively.

I am aware and sympathetic to the funding problems surrounding the project, but what can I say. Time and tide, the rent and bills, do not wait very long.

Thus, I feel obliged for my own welfare to commit myself to long-term projects here in New York whose financial feasibility is more in keeping with the realities of life and living. The ~~of these projects will consume at least a year, but I~~

# Not being recognized in report because of being a consultant...or research subject?

I can really see no reason, at this stage, why the CRV training developments should not be attributed to me, yet I see myself referred to as an "experienced consultant," and not the originator of methodologies leading to improved CRV. From this reiteration of SRI resource team personalities, are we to assume that Puthoff, Targ and May have originated, done the basic theoretical research, and designed the CRV training program? When, in actuality, Targ and May have had nothing to do with it at all, and Puthoff only minimally. Of course, I will not take this stance in matters having to do with general RV. However, regarding CRV, if Puthoff, Targ and May wish to undertake future research on CRV by themselves, I would have no objection, but of course, would not be a part of this.

Dear Hal -

While visiting AMSA, Lynn asked me to read the contract you had prepared for them. I noted that several aspects of [redacted] originated and developed constitute perhaps [redacted] proposed work. I also noted that none of that work is attributed to me in any way.

I have asked you about this type of handling before, at which time you have said that consultants normally do not or cannot under SRI procedures get mentioned in proposals.

Yet, in this case, I see a full biography attached for Charlie, who I believe is a consultant, too? I have no grudge against Charlie himself, but I resent him being placed over me as a senior researcher, since he has not contributed yet to the sustenance of the project.

So - the division between researchers and subjects is yet perpetuated, as I now see.

And, as it turns out, proposals, and reports are both written by yourself, Targ, and now ? Tart. And thus any work or discussion I produce at SRI do reach sponsors under authorships other than includes me.

The developmental work in co-ordinates, RV, training, psi channel basic communication languages and images, drills, and targets that are producing their results originate with me and therefore belong to me, and are being developed with you. They do not originate with Tart, and certainly not Targ. I will not tolerate my work being purposed under names other than includes me own. And the time has come to break up this long line of impasses, pretenses, insults.

Ingo.

CGI

Did it work?  
Yes!

Start Date	End Date	Length	Salary	Title
December 11 1972	31-Jul-72	6 months	13,600	particiante in
August 14th 1972	14-Aug-73	1 year	90 a day	Consultant will provide services in the field of Biofield Management
April 20 1976	April 2- 1977	1 year	200 a day	Consultant will provide services in Parapsychological Experiments
May 30 1979	April 30 1980	1 year	\$200 a day	Consultant will provide services in the field of Psychoenergetics
October 1 1980	March 31 1980	6 months	\$300 a day	Propretary CRV
April 11 1984	June 30 1984	3 months	\$400 a day	Propretary CRV
July 1 1984	september 1 1984	3 months	\$400 a day	Propretary CRV



PERSONAL & PRIVATE

MEMO

TO: R. Leonard  
FROM: H. Puthoff *HP*  
SUBJECT: Trammell Crow Program

DATE 14 February 1978

LOCATION 44

CC

Mr. Trammell Crow, one of America's leading businessmen, visited our psychoenergetics program on February 7, 1978, and participated successfully in a remote viewing experiment. Mr. Crow holds shares and ownerships in over 650 corporations and partnerships throughout the world, and Fortune magazine of November 1973 (attached) estimates that Mr. Crow's holdings exceed \$1.5 billion. Mr. Crow has developed, among many other centers, the Peachtree Center in Atlanta, the Embarcadero Center in San Francisco, and the World Trade Center in Dallas.

Mr. Crow's visit to our project culminates his interest that began last July when Mr. Crow, in the company of Mr. J. S. McDonnell, Chairman of the Board for McDonnell-Douglas, attended a conference on psychic phenomena in St. Louis at which we (Puthoff and Targ) presented papers on our work, and Ingo Swann talked on the Soviet threat in psychoenergetics research. Both Mr. Crow and Mr. McDonnell indicated then their interest in furthering psychic research in the United States in general, and lending a helping hand to our project here at SRI in particular.

Since that time, Mr. McDonnell has gifted our project here at SRI (\$20,000), and upon his visit, Mr. Crow pledged a gift of \$10,000. Both these gifts were labeled by them as stop-gap funds while they studied ways and means to create avenues of greater funding and interest in the government and business areas. We are able to report that Mr. McDonnell has visited Admiral Turner (DCI) recently, specifically to indicate to Turner the importance that he, Mr. McDonnell, attaches to the future of psychoenergetics research in the United States. At that meeting he indicated his intentions to generate large funding for the area, and requested for himself full classified briefings on research in this area, and this was granted.

McDonnell Douglas was a major American aerospace manufacturing corporation and defense contractor formed by the merger of McDonnell Aircraft and the Douglas Aircraft Company in 1967.

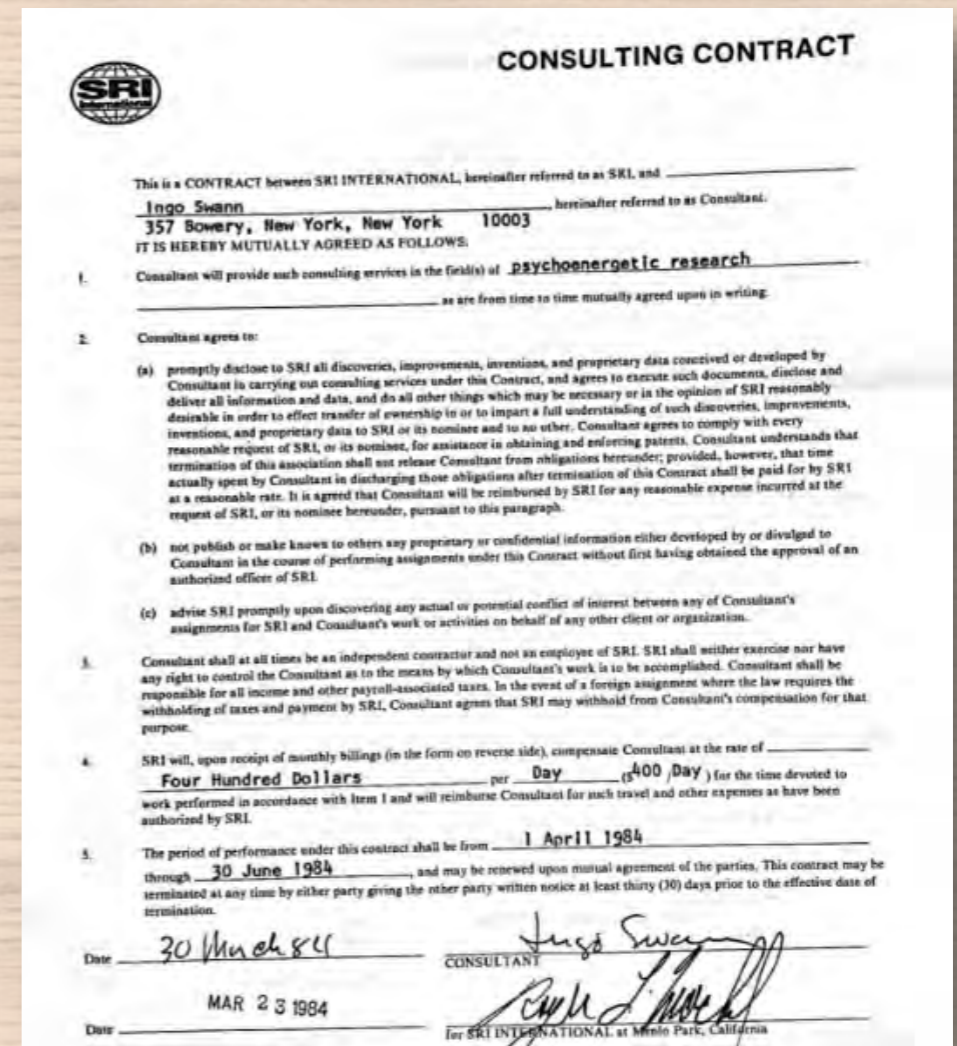




# SPECIAL CRV CONTRACT PROVISION FROM 1980 THRU 1984

**“Consultant will provide services in the assessment of current program and program development; in proposal development; in experiments; and in report preparation.**

**It is recognized that the Consultant brings to the Psychoenergetics Program a proprietary analysis technique, CRV, which shall remain his. The use of the CRV technique in the context of the SRI program shall take place only with the knowledge of the Consultant, and its proprietary status shall be noted”**



*“SRI shall be responsible for providing appropriate quarters, materials, and personnel for carrying on the C R V development work to the extent that such work is funded by SRI clients.”*

# TRAINEES, SUCH AS HAL, PRODUCED DAILY PROGRESS NOTES

\*Students made detailed notes of each stage approved by Swann

\*Students kept progress daily progress reports

\*Dozens of Letters, memos, reports of progress

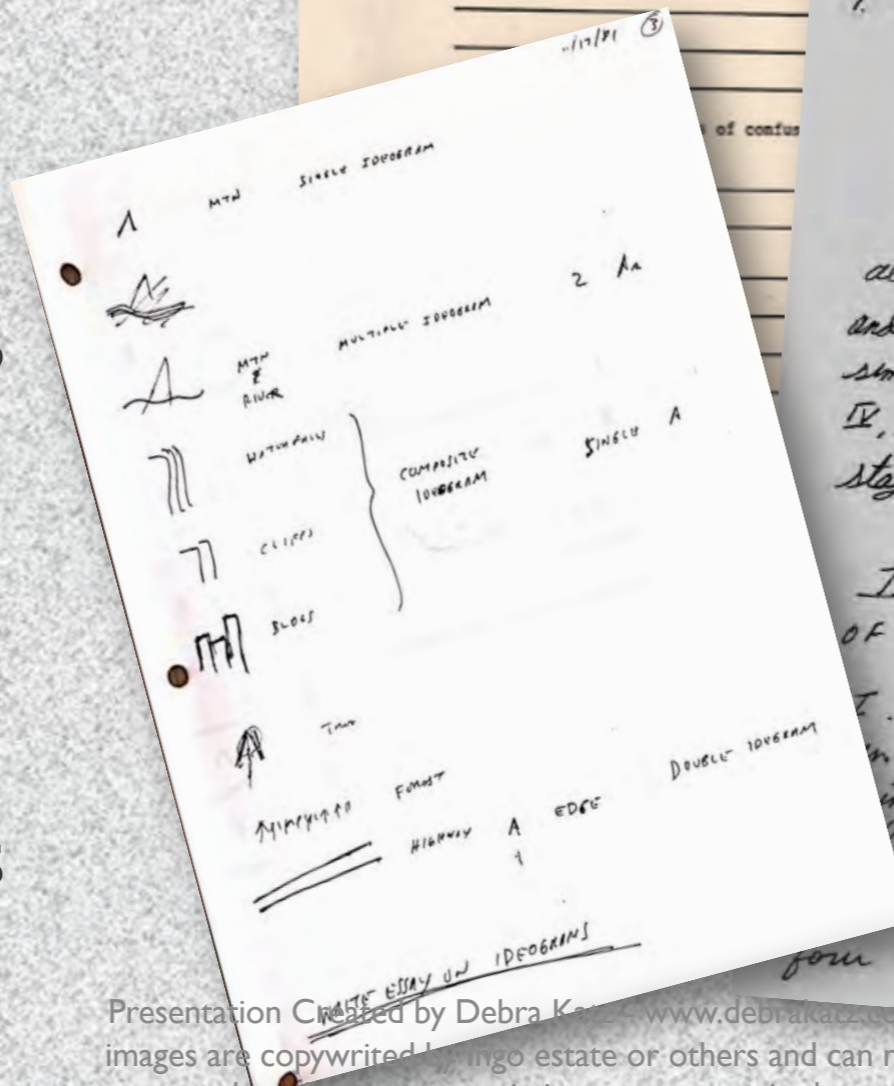
\*Each students has dozens to hundreds of transcripts

DAILY PROGRESS REPORT

Topic studied: RV SESSION Name: H. b. Putoff  
FOLLOWING BRIEF DISCUSSION Date: 1/10/82  
ON C-2

Positive comment: IN RV SESSION, COORDINATE DATA FINDING  
ITEMS THAT IN SPITE OF ANALYTICAL PREJUDICE  
(BECAUSE OF MISINTERPRETATION OF PART OF CLOSURE  
ASSOCIATED WITH COORDS)  
STAGE, I'VE SEEN IT BEFORE

Negative comment: NONE



Excellent  
Bill  
25 Oct 84

STAGE III ESSAY

1. Stage III has five legs:

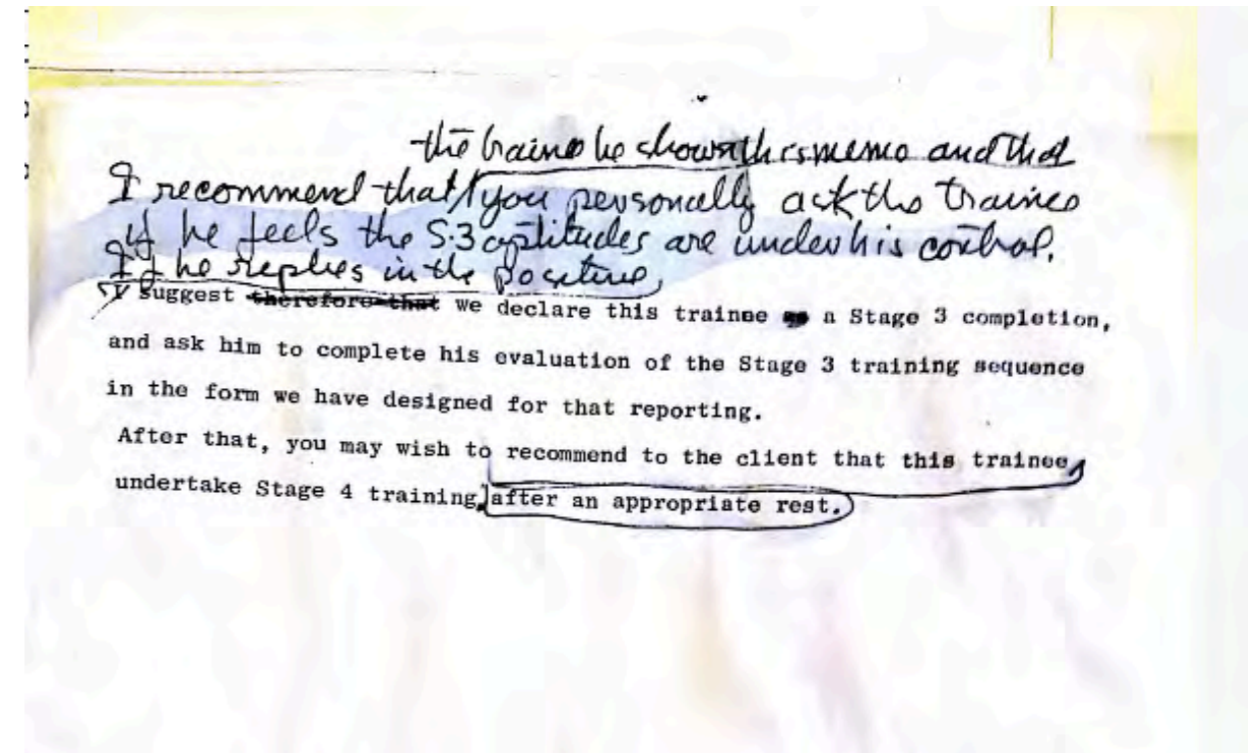
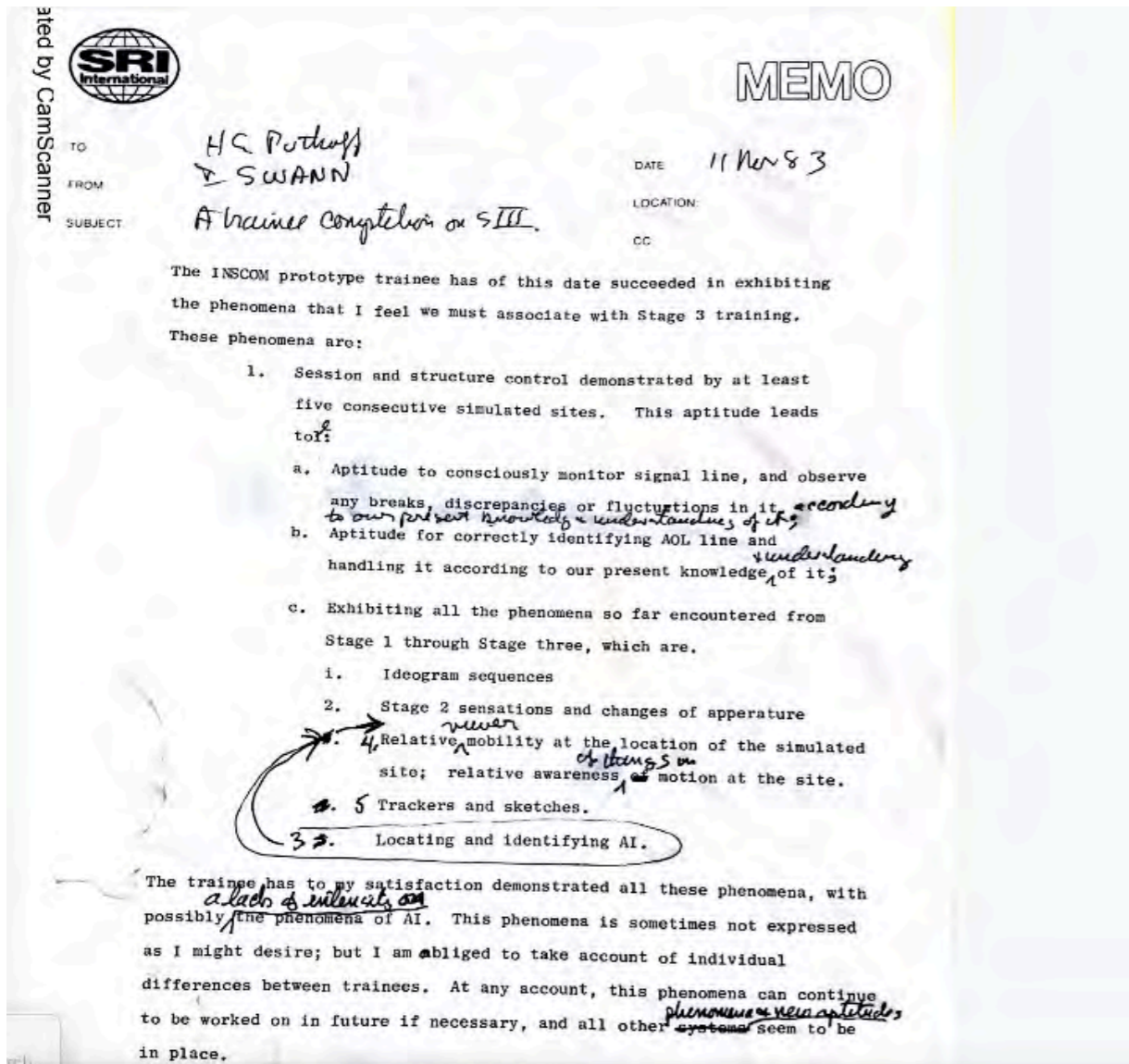
- a) AI
- b) Enhancing Dimensional contact
- c) motion and mobility
- d) Tracers
- e) sketches

all five of these legs are inter-related and have to be achieved somewhat simultaneously. The latter stages, stage IV, V and VI rest on the expertise of stages I, II and III

The goal of stage III is COMMAND OF STRUCTURE.

... is a sensitivity or response to a ... when the aperture shows signs of ... look for the AI. Dimensionals ... an eminent change of aperture. we are looking for is three, preferably four dimensionals and a declared ...

# Always looking to create the most conducive conditions for trainees



**SECRET**

SAICMP91.326

copy 6 of 6

SCIENCE PANEL REPORT

SRI STUDIES IN REMOTE VIEWING:

A PROGRAM REVIEW

1 MARCH 1984

“A considerable variety of material was presented with photographic back up in support of the validity of the perceptual method. Much of this was highly impressive. The data showed the effects of training on the success rate, which typically reached a sustained plateau at a level higher than prior to training, both for groups of subjects as well as for individual trainee’s”.

Page 4.

21 February 1984

Dear Dr. Puthoff,

I've now read and thought about your memo on documentation, the whole picture. According to my memory as to how it came about that we landed in this present impasse leads me to make the following statements, for whatever they are worth.

At the time when we had culminated the prototype training patterns with the first three volunteers, I myself held forth on the fact that we then should not any further advertize to other clients that training was tentatively available until we had seen to at least basic forms of documentation. As it came about however, the project as a whole was then in one of its many funding cul de sacs, and since another client was hot to begin training and had money, a joint decision was taken to go forward in that direction. This decision was mostly taken by the COTR at the time, but conditions suggested to all that there was not much choice otherwise. This then, at the time, was not all that erroneous a decision.

I, however, in my position as consultant, advised that documentation was, under those conditions, likely to catch up as a "problem" and we would never thereafter be able to conduct documentation procedures in an orderly manner and further when that time did arrive, that the entire team would have to be mutual supportive of each other, and ensure the time and space to put in the documentations that otherwise had been set aside at the time, for the reasons above states.

The lack of documentation, therefore, was not exactly an oversight, as is currently being suggested; but rather the result of decisions taken at the time to keep the entire work alive. I further advised that the danger in commencing training with the other group was in that the training would be seen to be workable, and that when this was understood that this special group would come forward with increased funds and increased manpower and enlarged funding and a work schedule which would imply that we would have to forfeit R&D and other a liged work in order to provide the deliverables which would be expected under the working mandate.

We arrived at this point a short time ago. The trouble is that no one wishes to decline funds ~~which~~ in order to commit themselves to other areas - ultimately necessary. On top of all this now exist the antagonisms that have come to result.

If therefore, you wish to hold yourself solely to blame for all this, that is your business; but it would be my opinion that you need not and that indeed to do so is just adding one more ~~incompetence~~ into an already large heap of them.

Consultant Swann has voiced objections with regard to certain proposed approaches to documentation of CRV training, while at the same time recognizing that documentation is key, and in the interests of his training product. His willingness to support the pre-training trials involving descriptor-list checksheets indicated to me that his opposition to certain approaches was not necessarily a manifestation of global opposition to documentation per se, but rather might indicate specific unarticulated concerns about matters of potential technical merit. Considering that (1) he has generated a productive track record in remote viewing matters, and (2) he has in the light of hindsight demonstrated a keen intuition about subtle factors concerning remote viewing protocols, I felt it was my job to debrief Swann about his concerns in sufficient depth that we could evaluate such concerns and determine appropriate action. I have now gotten to the heart of the matter and can state with some precision exactly what his viewpoint is, out of which arises his concern. My summary of the essence of that viewpoint is as follows:

The attempt to develop a near-flawless remote viewer can be likened to an attempt to grow a near-flawless crystal in the laboratory. In both cases the structure is carefully built up, layer upon layer, with a lot of attention paid to minimizing outside influences so as not to inadvertently introduce distortions or breaks in the structure being formed.

With regard to documentation of the growth process, one could, in the crystal-growing case, measure crystal length each day with calipers, but at the cost of systematically jarring the system such that perhaps only 30 - 40% of the crystal would remain single-crystalline, since the caliper-measurement process itself is a major system influence. Likewise, systematic measurement of the RV process in an obvious straightforward manner (e.g., on the basis of weekly or biweekly Class B testing) might, as in the analogy, reduce the potential of near-flawless remote viewing to a similar lesser value of 30 - 40% for the same reason - the measurement process itself becomes a major system influence, in this case intruding on the intricate nature of the buildup of psychological programming to handle subliminal inputs.

This does not mean, of course, that remote viewing is not "scientific" or that it is not possible to document progress in the remote viewing arena. Any more than by analogy it means that near-flawless crystal-growing is not "scientific," or that it is not possible to document crystal growth. It does mean, however, that, in both cases, careful thought must be given to the apparent requirements for optimal growth, and to the need for special documentation/measurement procedures designed specifically to minimize untoward effects on the system being measured due to the measurement process itself.

21 February 1984

Dear Dr. Puthoff,

I've now read and thought about your memo on documentation, the whole picture. According to my memory as to how it came about that we landed in this present impasse leads me to make the following statements, for whatever they are worth.

At the time when we had culminated the prototype training patterns with the first three volunteers, I myself held forth on the fact that we then should not any further advertize to other clients that training was tentatively available until we had seen to at least basic forms of documentation. As it came about however, the project as a whole was then in one of its many funding cul de sacs, and since another client was hot to begin training and had money, a joint decision was taken to go forward in that direction. This decision was mostly taken by the COTR at the time, but conditions suggested to all that there was not much choice otherwise. This then, at the time, was not all that erroneous a decision.

I, however, in my position as consultant, advised that documentation was, under those conditions, likely to catch up as a "problem" and we would never thereafter be able to conduct documentation procedures in an orderly manner; and further when that time did arrive, that the entire team would have to be mutual supportive of each other, and ensure the time and space to put in the documentations that otherwise had been set aside at the time, for the reasons above states.

The lack of documentation, therefore, was not exactly an oversight, as is currently being suggested; but rather the result of decisions taken at the time to keep the entire work alive. I further advised that the danger in commencing training with the other group was in that the training would be seen to be workable, and that when this was understood that this special group would come forward with increased funds and increased manpower and enlarged funding and a work schedule which would imply that we would have to forfeit R&D and other a liged work in order to provide the deliverables which would be expected under the working mandate.

We arrived at this point a short time ago. The trouble is that no one wishes to decline funds ~~which~~ in order to commit themselves to other areas - ultimately necessary. On top of all this now exist the antagonisms that have come to result.

If therefore, you wish to hold yourself solely to blame for all this, that is your business; but it would be my opinion that you need not and that indeed to do so is just adding one more ~~incompetence~~ into an already large heap of them.

# The Documentation Issue

INGO WERE  
YOU GIFTED?

“I was a hard  
worker”

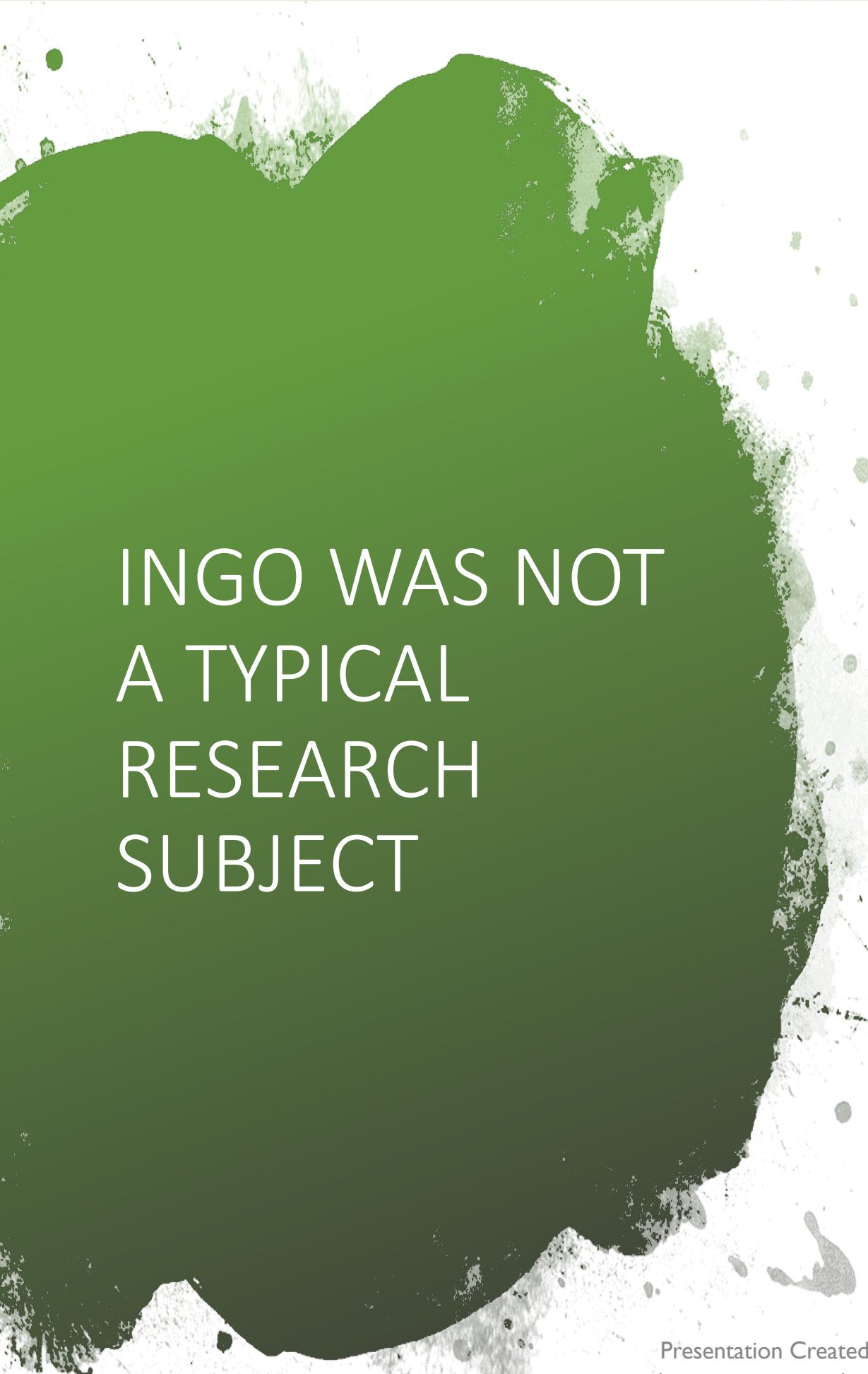
- SUPERMAN IMAGE
- STUBBORN IMAGE
- STAYING IN CONTROL
- SPEAKING UP AND OUT
- REFUSING TO BE BORED
- DOING A MILLION TRIALS
- BEING HONEST ABOUT LIMITATIONS
- CREATING A FIRM INTELLECTUAL FOUNDATION – BOOK WORM

# WHAT MADE INGO SUCCESSFUL?

More clearly put, once I realized that I'd have to give up, then I realized that I was hooked, even addicted -- not to the glamour, etc., of the field, not to the woo-woo psychic persona, but to the thrill of succeeding in experiments -- addicted to the thrill of surmounting the impossible.




This kind of "think" is akin to why mountaineers climb mountains -- because "they are THERE." Or akin to explorers who trek into the unknown -- because it is THERE.



# INGO WAS NOT A TYPICAL RESEARCH SUBJECT

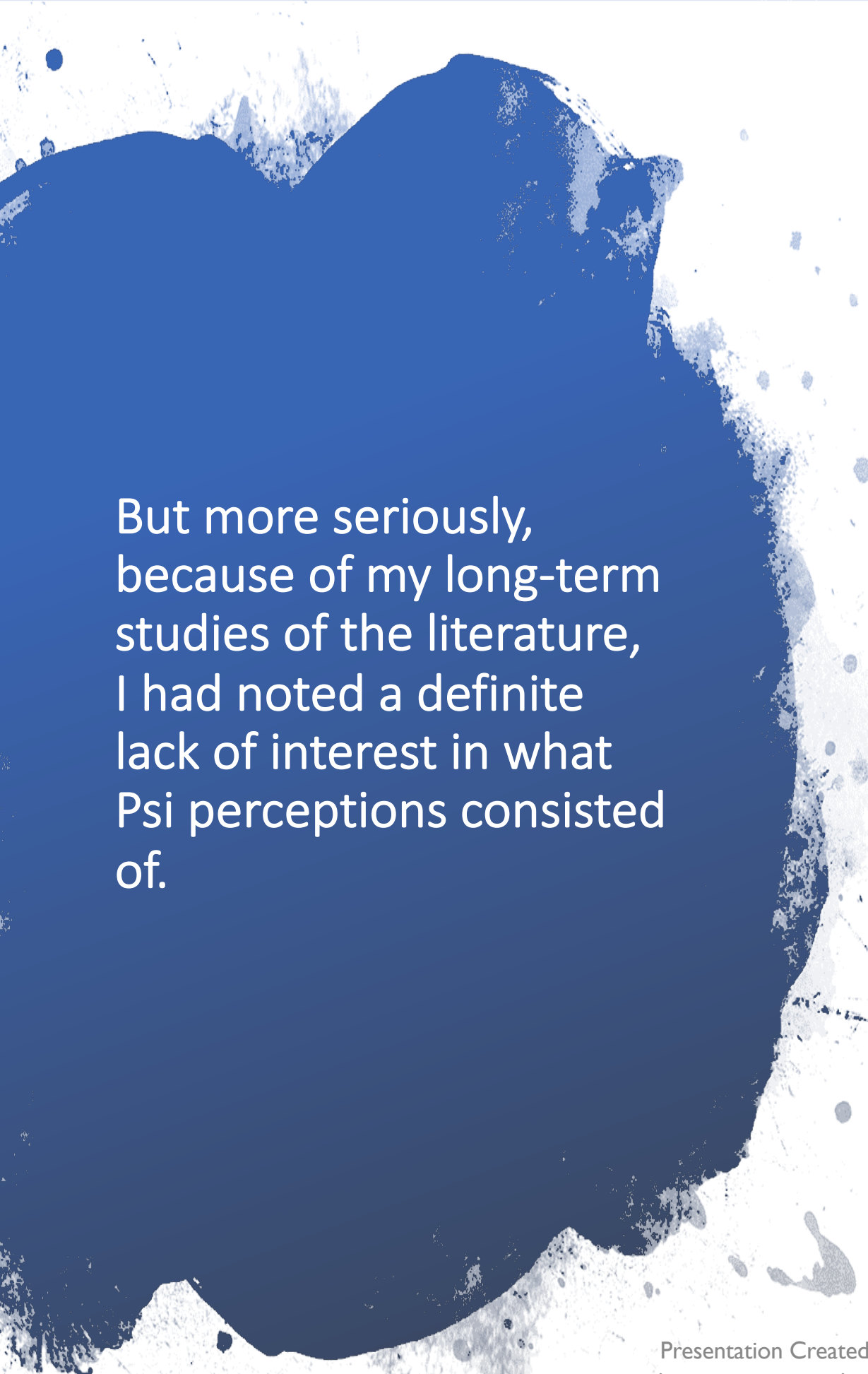
- Finally, no one was interested in what a mere subject had to say about things. As I had found out, they were supposed to produce results, but otherwise keep their mouths shut, keep their knowledge and observations to themselves.  
I had no intention of being such a creature.
- Puthoff listened thoughtfully, and then said something like: "But I am interested."





# INGO REFUSED TO JUST BE A RESEARCH SUBJECT

- . I was, and am, a workaholic, demanding perfection or at least the best possible -- as was Janet Mitchell, Dr. Schmeidler, and, in a somewhat lesser sense, Dr. Osis. And with a sort of renewed enthusiasm, we proceeded to produce experiments of several kinds at the ASPR.
- In order to throw my weight around within my newfound glory, I suggested that we meet and TALK about what we were doing. Here was a subtle shift -- because experimenters typically DID NOT talk about experiments with subjects any more than experimenters would discuss experiments with rats or guinea pigs.
- As I explained (and was also later to explain in far more impressive surroundings), it was one thing to set up experiments merely to see if certain phenomena existed.
- But something else was involved IF researchers wanted performance from their subjects. How could a subject really attempt something if the subject had no idea of what was involved? Running a rat through an experiment designed to reward the rat with food if it did what was wanted -- well that was one kind of experiment.
- Running an human being through an experiment designed only to please the experimenters' expectations, an experiment with NO reward for the human subject if it did what was wanted -- well, that was ANOTHER kind of experiment.
- Rats and guinea pigs got food as a reward for succeeding. Human subjects got . . . (nothing, perhaps a brief word of praise). I suggested that subjects who succeeded should be given a one-carat diamond. THAT ought to inspire them.



But more seriously, because of my long-term studies of the literature, I had noted a definite lack of interest in what Psi perceptions consisted of.

After all, psychics do not utilize their physical eye mechanisms to see what they "see." In the first instance, it seemed that their "seeing" depended on mental image pictures, although many in the past had said that they didn't "see" anything, but merely "sensed" whatever they did.

Some said they "heard" whatever they "sensed" -- and not a few had said that the "information" came from their toes or armpits -- or some other unusual anatomical place or part.

# HE FELT FEAR MADE HIM SUCCESSFUL

But the fear was also a fascination, I suppose. I remember an early fear as a child -- that of hiking alone in the woods. One day I determined to do just that, and did so. A simple thing, to be sure. But in the end that fear vanished. Thereafter, when I found myself afraid of something I simply worked up my courage and went and did it -- alone, all by myself.

Back in 1953, the idea of having to go into the Army put me in bed a full week with a pillow over my head, a kind of blinding psychotic episode. Then one day I got out of bed and marched to the military recruiting office in Salt Lake City and said "here I am." This solution to fear had led me to do many stupid things -- such as walk fifty-seven blocks through a New York subway tunnel when I realized I was afraid to do so.

One reason I tried parapsychology experiments was that I was afraid I would fail at them -- and did so many times.



What set Ingo Apart from others  
was circumstances – his allowed  
for

- A million hours of Practice
- Support
- Creativity
- Experimentation
- Income while practicing
- Certain Personality characteristics that worked for him and against him

# He tried to stay in control

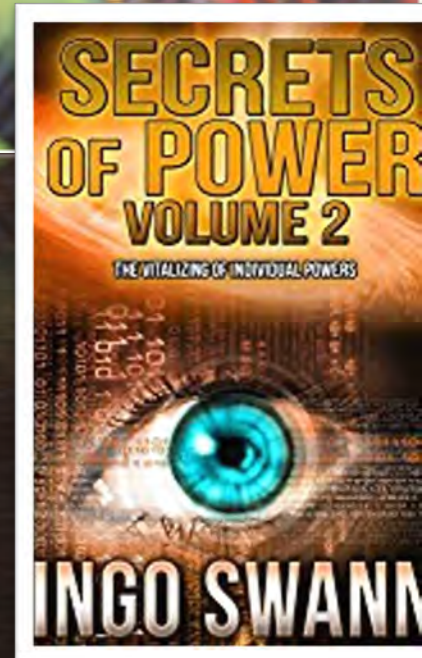
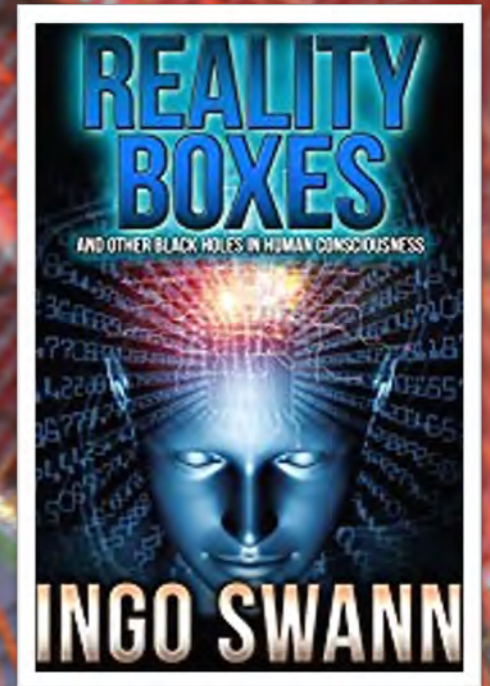
- Rules for himself
- He was not going to say he was psychic, or claim anything.
- He wasn't going to "demonstrate anything to anyone, not even scientists..what I would do is try their experiments."
- - results of experiments would speak for themselves, up to experimenters to defend their results. They would take falls and glory too.
- He would have to decide if experiments were ultimately worthy of him or not.
- Would not take part in an experiment if intuitively he felt would not succeed.
- Would not give readings.
- Would do experiments for free unless researchers were getting paid and then he should be paid too.
- Not talk to media types except to scold them.
- Never under any circumstances talk or interact with a skeptic or enter into any debates with that. If needed would attack them. Use their own tactics against them.
- Not seek to criticize or praise other psychics- psi potential is integral in our species.
- These were right at the time in 1976, he says might not be now in 1996.



# SWANN



# SWANN WAS ALSO A SOCIAL SCIENTIST



- Corresponded with thousands of researchers, artists.
- He felt that what he was discovering was going to revolutionize the field of psychology.

# Psychic Puts Ability Over Image

By Michael R. Fancher  
A Member of The Star's Staff  
Ingo Swann, psychic.

The name and title conjure images of crystal balls, Tarot cards and visitations with the dead. You expect to be greeted by a man wearing a turban and pulling flower bouquets from his sleeve.

But Ingo Swann doesn't fit the image. In fact he doesn't like to be called a psychic because the term is surrounded by too many connotations. He says of himself:

"I have certain abilities which most people have. In my case they seem to be more pronounced."

Those abilities have been the subject of study by two laser

physicists at Stanford Research Institute ((S.R.I.), Menlo Park, Calif. The scientists, Dr. Harold E. Puthoff and Dr. Russell Targ, reported last week on a preliminary series of experiments that were started in July.

A press release from S.R.I. said: "In the preliminary work, using a shielded magnetometer, Mr. Swann apparently demonstrated an ability to increase and decrease at will the magnetic field within a superconducting shield . . . In further preliminary work Mr. Swann also demonstrated other apparent abilities, such as preceiving the location of and identification of objects hidden in containers."

The program, S.R.I. said, is aimed at determining the existence of extraordinary functioning in human beings. Swann was chosen as a subject in the program because he apparently has demonstrated abilities that science has not yet explained.

Swann, 26, was in Kansas City to speak at the Jewish Community Center tonight at 8 p.m. His lecture and discussion will not include demonstrations or attempts to convince the audience of anything, he said.

"Showmanship and things like that I'm not interested in. I'm not in the conversion practice," Swann stressed.



INGO SWANN

His average working day, Swann said, is filled with anything but stardom. He gets out of bed at 6 o'clock each morning, smokes cigars and drinks coffee for about an hour before heading to the laboratory at S.R.I.

From about 8:30 o'clock until noon Swann participates in repetitive experiments of perceptual tasks, such as viewing three boxes and attempting to determine which one has something in it.

After a break for lunch the test data is analyzed and new ideas for tests are developed. Swann goes home about 6 p.m.

"It's all very dull," Swann states, but he quickly adds that he finds the work fulfilling. "I feel very enthused about it," he said.

He thinks the effort is developing solid data about parapsychology. A major development, he said, has been the demonstration of a very pronounced learning pattern. Swann thinks that as he uses his abilities he is strengthening them.

Are his abilities human or some supernatural power?

When the project at S.R.I. ends in August he plans to return to New York and resume his career as an artist.

satisfied in my own mind that it a human potential, not an individual potential."

Swann likened his abilities to the human potential to read. Everyone is born with the ability to read, but some people never exercise that ability, he asserted.

"I seem to have been born with a lot of them (extraordinary abilities) operative," Swann said.

Over the years he has learned to accept scepticism. "In the end I think sceptics are entitled to their scepticism. I'd only ask for a healthy scepticism and not a destructive one.

"Every spurt forward that humanity has ever experienced has had its detractors."

If parapsychology is to be a spurt forward Swann thinks it will result from cumulative research, rather than personal claims of personal interpretation. Scientific investigation must replace folklore and superstition.

With that in mind he is continuing his work at S.R.I. and several other similar projects.

When the project at S.R.I. ends in August he plans to return to New York and resume his career as an artist.

"I have certain abilities most people have. In my case they are just more pronounced"



# Lets Hear From Coral

- <https://youtu.be/vge2lDINfh4>

# Swann Says:



If the superpowers had been considered a species thing from the start at some place back, say, around 1870, then the history of psychical research and parapsychology would have been entirely different. What has rather happened, though, is that we tend to think of the superpowers as belonging to selected individuals who, for reasons peculiar to their psychology, manifest them more vitally than others do.



And so our concepts regarding the superpowers is locked into time and place at the individual level -- resulting in the assumption that we can treat positively or negatively the individuals (and what THEY are thought to represent) according to our dispositions one way or another.



If we consider the superpowers an inherent species thing, then we can immediately see that various forms of them have manifested throughout the whole of our recorded history, and in all past and present societies. By logical extrapolation here, we can be sure that they will continue to emerge into the indeterminate future.

# In closing – What were Ingo's Gifts

He was stubborn

He spoke his mind even not when asked

He worked non stop

He took the failures or those in his way and instead revolved to fight them

Perseverance

Support from others early He controlled his environment as much as he could

He didn't fit into expectations of others, he taght

# Redefining Gifted



Ablity to work hard



To stay focused



To deal with BS



To stand ones ground but know when not to



To communicate

Enough to  
study to form  
an entire  
University



Not an either or scenario – CRV or untrained



However, even those in ERV, David morehouse



Recognized without a monitor CRV training or ones that address concepts in it can be useful.



The monitor/interview takes the role away from one having to be trained



Different Strokes for different folks!



Cross training is beneficial)



## LETTER INFORMING INGO OF SRI PROGRAM ENDING

“Ingo, when the modern history of field is finally written, you must occupy the top position. While others have contributed greatly, none have matched your input. Of course your skill as a practitioner is important, but I am referring to your unique contribution as a researcher. There is no one in the field who is as intensely committed to understanding the phenomena as you...no one I know works as hard as you do. It is this commitment and the resulting insight that ultimately should receive recognition. The SRI project would not have happened without it. The fact that our scientific oversight committee are unanimous in its opinion about the existence of an important anomaly is a bi product of your initial work”.



## FINAL CONCLUSION:

Presentation Created by Debra Katz - [www.debrakatz.com](http://www.debrakatz.com); all images are copywrited by Ingo estate or others and can not be shared without permissions per copywrite law

**SWANN'S ABILITIES WERE INNATE AND LEARNED, AS IS OUR OWN**

# Watch the Presentation Here:

- <https://youtu.be/LNPbx0bTP3A>

Presentation Created by Debra Katz - [www.debrakatz.com](http://www.debrakatz.com); all images are copywrited by Ingo estate or others and can not be reproduced or shared without permissions per copywrite law.

Please direct any questions about this presentation to Debra Katz – She is working on a paper based on this subject but it won't be completed until after she finishes her dissertation (Not on this subject unfortunately after subversive forces that impacted Ingo and continue to attempt to stifle or distort the information contained in this presentation sabotaged that plan) sometime in Spring, 2021.